

EasyProbe software for machining centres

Introduction to EasyProbe software

Renishaw EasyProbe software cycles, designed for use by a machine tool operator, simplify the setup of jobs and measuring tasks on machining centres.

Installing and using EasyProbe cycles

An EasyProbe installation utility is run on a suitable computer. This provides a series of options that allows macros to be assembled and issued to a file. On completion of the installation process, the file is ready to be downloaded to the machine tool.

The macros are then loaded into the memory of the machine tool. Here they are used, as a set of canned cycles, for simple job setup and measuring tasks.

To use a cycle, the operator firsts jogs the probe to a suitable start point. The required cycle is then run, using either the Manual Data Input (MDI) mode or a simple part program.

Cycle types

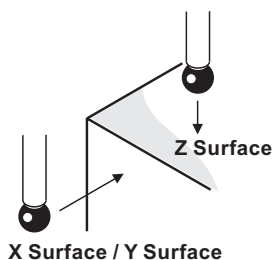
- Probe length and stylus size/offset calibration.
- X, Y, and Z single-surface measurement and work offsetting.

- 4-point bore, external boss and internal boss measurement and work offsetting.
- 2-point pocket, web, and internal web measurement and work offsetting.
- Measurement of angles and surfaces in any 2-axis plane.
- Angle measurement for 4th-axis work offsetting.

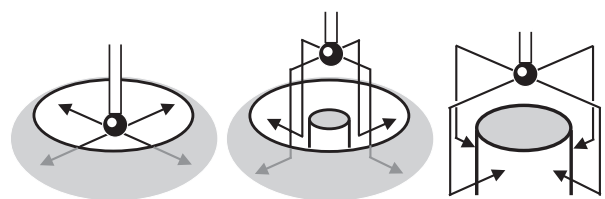
Features and benefits

- Minimal operator programming skill is needed.
- Fast and simple job setup operations.
- EasyProbe standalone software package is compatible with other Renishaw software packages.
- Provides a set of cycles to match the machine tool options and preferences of the user.
- Facilitates the measurement of an angle, surface, and feature.
- Work offset setting of an angle, surface, and feature. Preset position values can be used.
- Measured results are stored in a macro variable list.
- Suitable for either MDI mode operator use, or measure and setting tasks using the part program.

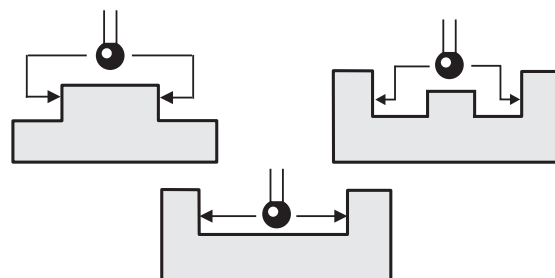
X, Y, Z surface measure cycle



Bore / Boss measure cycle



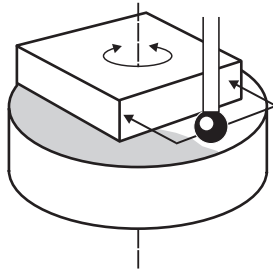
Web / Pocket measure cycle



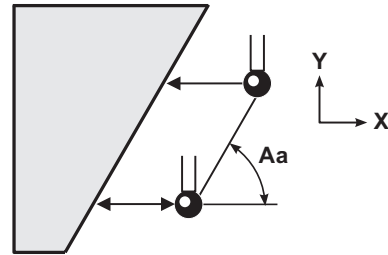
RENISHAW 

DATA SHEET

4th axis measure cycle



Angle measure cycle



Compatible controllers

EasyProbe software can be installed on the following controllers:

- Fanuc 0, 6, 10–15, and 16–21M (also Fanuc 0M macro A-keyboard compatible).
- Meltas M3, M50, 300 series, and 500 series.
- Yasnac MX3, I80, M80, J50, and J300.
- Haas.

IMPORTANT

EasyProbe software is supplied with a single machine/user licence. The installation process restricts your choice to one machine controller type only.

Macro variables used for calibration and setting

Compatible with Renishaw standard software

#500, #501, #502, #503, #504, #505, and #506

Compatible with Renishaw Inspection Plus software

#500, #501, #502, #503, and #506

Macros provided

O9023, O9770, O9771, O9772, O9773, O9774, and O9775

Memory requirements of machine tool

Macros require approximately 6Kb (15 metres) of free memory.

Computer specification for running the install utility

- Windows™ 3.1, 95, 98 or NT operating system.
- 3.5in floppy disk drive.

EasyProbe software part no.

Kit no.: A-4010-0001

Contents: EasyProbe software on floppy disk.
EasyProbe Cycles Programming Guide.

The Programming Guide is also supplied as a PDF file on floppy disk. This can be read and printed using Adobe Acrobat Reader (version 3.0 or later). Acrobat Reader software is not supplied with the EasyProbe software.

Renishaw reserves the right to change specifications without notice.

Renishaw plc, New Mills, Wotton-under-Edge, Gloucestershire GL12 8JR, **United Kingdom**.
International Tel +44 1453 524524 **National Tel** 01453 524524 [07000 RENISHAW]
International Fax +44 1453 524901 **National Fax** 01453 524901

email genenq@renishaw.co.uk
Internet http://www.renishaw.com
Telex 437120 RENMET G

Renishaw Latino Americana Ltda.,
Calçada dos Crisântemos 22,
C.C. Alphaville, C.e.p. 06453-000
Barueri SP, **Brazil**.
Tel +55 11 7295 2866
Fax +55 11 7295 1641

Renishaw S.A.,
15 rue Albert Einstein,
Champs sur Marne,
77437 Marne la Vallée,
Cedex 2, **France**.
Tel +33 1 64 61 84 84
Fax +33 1 64 61 65 26

Renishaw S.p.A.,
Via dei Prati 5,
10044 Pianezza,
Torino, **Italy**.
Tel +39 011 9 66 10 52
Fax +39 011 9 66 40 83

Renishaw A.G.,
Poststrasse 5,
CH 8808 Pfäffikon,
Switzerland.
Tel +41 55 410 66 66
Fax +41 55 410 66 69

Renishaw Inc.,
623 Cooper Court,
Schaumburg,
Illinois 60173,
U.S.A..
Tel +1 847 843 3666
Fax +1 847 843 1744

Renishaw's Representative Offices
The Peoples' Republic of China Beijing **Tel** +86 10 641 07993
Indonesia Jakarta **Fax** +86 10 641 07992
U.S.A. **Tel** +62 21 428 70153
Singapore **Fax** +62 21 424 3934
Tel +65 438 2779
Fax +65 438 2780

Renishaw (Hong Kong) Ltd.,
Unit 4A, 3/F, New Bright Building,
11 Sheung Yuet Road, Kowloon Bay,
Hong Kong.
The Peoples' Republic of China.
Tel +852 2753 0638
Fax +852 2756 8786

Renishaw GmbH,
Karl-Benz Strasse 12,
72124 Pliezhausen,
Germany.
Tel +49 712 797960
Fax +49 712 788237

Renishaw KK,
Across City Nakano-Sakaue,
1-38 Chuo 1-chome, Nakano-
ku, Tokyo 164-0011,
Japan.
Tel +81 3 5332 6021
Fax +81 3 5332 6025

Renishaw Iberica S.A.
Edificio Océano,
Calle Garrotxa 10-12, Parque Más Blau,
08820 Prat de Llobregat, Barcelona,
Spain.
Tel +34 93 478 21 31
Fax +34 93 478 16 08

Renishaw's Liaison Office
India Bangalore **Tel** +91 80 509 5419
Fax +91 80 509 5420
Tel +91 80 509 5421