

Renishaw DS20 scanner

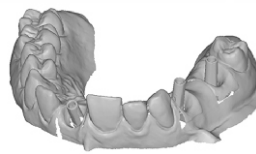


Applications

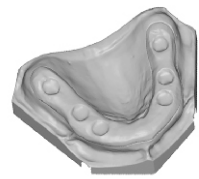
The Renishaw DS20, which employs a two-axis rotation system and a high-end 3D scanning module, is ideal for the scanning of a single tooth, full arches or more complicated cases. Furthermore, its customised jigs enable easy mounting of any model meaning it is possible to scan a wide range of model shapes. The DS20 uses standard scanning paths for each model type. Users can also customise paths for models of irregular shapes to obtain perfect scanning data.



Crowns and bridges



LaserAbutments™



LaserBridges™

Key Features



Twin camera technology

The DS20 boasts a function for obtaining a single set of data with two cameras.



White light scanning

The white light 3D scanning technology allows the user to obtain data that is much clearer than the conventional laser type system.



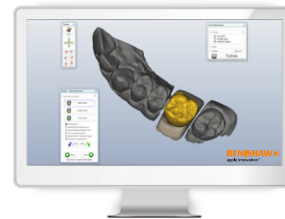
Open system

The basic output of the DS20 is an STL file so many CAD software packages can utilise it.



Easy connection

The DS20 has a simple USB connection to the PC.



Specifications

Category	Description
Camera resolution	1.3 Megapixel
Point spacing	0.065 mm
Scanning area	80 mm × 60 mm
Scanning principle	Phase-shifting optical triangulation, twin camera type
Dimensions	212 mm × 370 mm × 449 mm
Weight	16.6 kg
Light source	LED, 300 ANSI-lumens
Interface	USB 2.0 high-speed
Power	AC 85 ~ 265 V, 47 ~ 63 Hz