

LinkAbutments™



LinkAbutments

Introduction

LinkAbutments are available in zirconia or cobalt chrome. Manufactured to your custom designs for bonding in-lab to your chosen titanium base.

This offers a cost effective two-piece design for screw-retained or cement-retained restorations.

Screw-retained crown

- Easily retrieved for maintenance
- Porcelain applied directly to the LinkAbutment
- No excess cement during fitting
- Lower cost than cement retained crowns

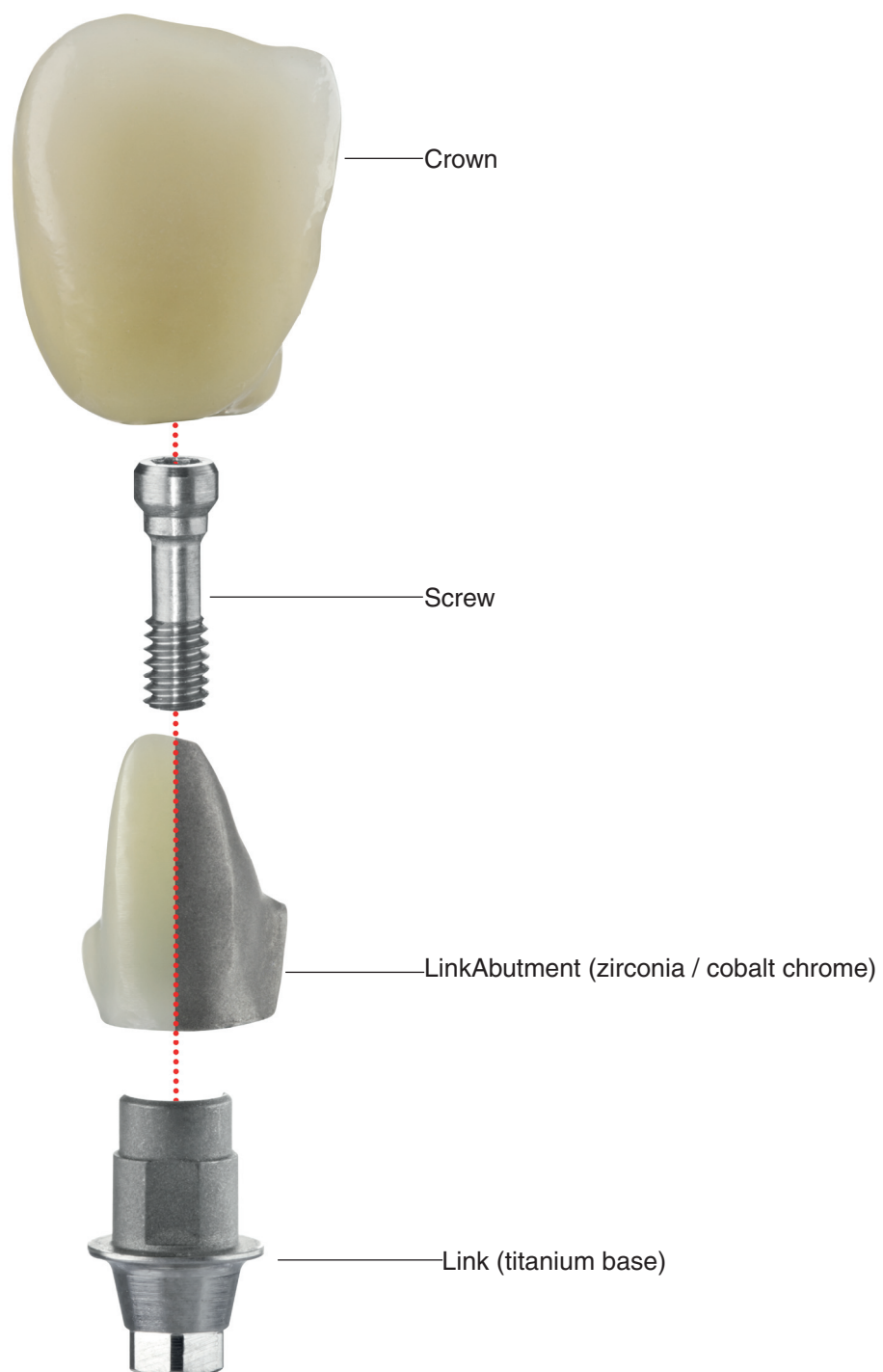
Cement-retained crown

- No change to existing process
- Suitable for anterior region
- Aesthetics not compromised by composite

Manufactured entirely in the UK



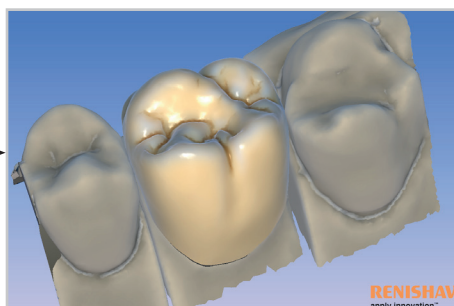
Components



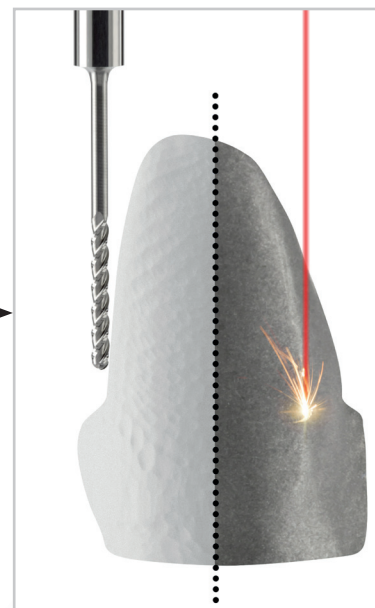
The process



Scan link



Designed abutment
(Wax-up option available)



Manufacture (milled zirconia or
laser melted cobalt chrome)



→ **Screw retained**



Finished screw-retained crown bonded (in-lab)

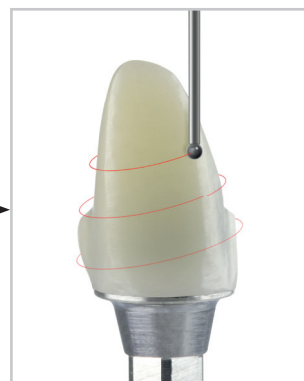
“Renishaw’s link abutments are of the highest quality and since we have started using them we have seen our business go from strength to strength.”

Eric Storrar
E Storrar Cosmetic Dental
Loughton, UK

→ **Cement retained**



Bond abutment



Scan abutment



Cement retained crown

About Renishaw

Renishaw is an established world leader in engineering technologies, with a strong history of innovation in product development and manufacturing. Since its formation in 1973, the company has supplied leading-edge products that increase process productivity, improve product quality and deliver cost-effective automation solutions.

A worldwide network of subsidiary companies and distributors provides exceptional service and support for its customers.

Products include:

- Additive manufacturing, vacuum casting, and injection moulding technologies for design, prototyping, and production applications
- Advanced material technologies with a variety of applications in multiple fields
- Dental CAD/CAM scanning and milling systems and supply of dental structures
- Encoder systems for high accuracy linear, angle and rotary position feedback
- Fixturing for CMMs (co-ordinate measuring machines) and gauging systems
- Gauging systems for comparative measurement of machined parts
- High speed laser measurement and surveying systems for use in extreme environments
- Laser and ballbar systems for performance measurement and calibration of machines
- Medical devices for neurosurgical applications
- Probe systems and software for job set-up, tool setting and inspection on CNC machine tools
- Raman spectroscopy systems for non-destructive material analysis
- Sensor systems and software for measurement on CMMs
- Styli for CMM and machine tool probe applications

For worldwide contact details, please visit our main website at www.renishaw.com/contact



RENISHAW HAS MADE CONSIDERABLE EFFORTS TO ENSURE THE CONTENT OF THIS DOCUMENT IS CORRECT AT THE DATE OF PUBLICATION BUT MAKES NO WARRANTIES OR REPRESENTATIONS REGARDING THE CONTENT. RENISHAW EXCLUDES LIABILITY, HOWSOEVER ARISING, FOR ANY INACCURACIES IN THIS DOCUMENT.

©2013 Renishaw plc. All rights reserved.

Renishaw reserves the right to change specifications without notice

RENISHAW and the probe symbol used in the RENISHAW logo are registered trade marks of Renishaw plc in the United Kingdom and other countries. apply innovation and names and designations of other Renishaw products and technologies are trade marks of Renishaw plc or its subsidiaries. All other brand names and product names used in this document are trade names, trade marks or registered trade marks of their respective owners.



H - 5489 - 8740 - 01 - A

Issued: 0613 Part no. H-5489-8740-01-A