

Planning an RMI-Q system installation (new machine integration)



© 2013 Renishaw plc. All rights reserved.

This document may not be copied or reproduced in whole or in part, or transferred to any other media or language, by any means, without the prior written permission of Renishaw plc.

The publication of material within this document does not imply freedom from the patent rights of Renishaw plc.

Disclaimer

RENISHAW HAS MADE CONSIDERABLE EFFORTS TO ENSURE THE CONTENT OF THIS DOCUMENT IS CORRECT AT THE DATE OF PUBLICATION BUT MAKES NO WARRANTIES OR REPRESENTATIONS REGARDING THE CONTENT. RENISHAW EXCLUDES LIABILITY, HOWSOEVER ARISING, FOR ANY INACCURACIES IN THIS DOCUMENT.

Trade marks

RENISHAW and the probe symbol used in the RENISHAW logo are registered trade marks of Renishaw plc in the United Kingdom and other countries.

apply innovation and names and designations of other Renishaw products and technologies are trade marks of Renishaw plc or its subsidiaries.

All other brand names and product names used in this document are trade names, trade marks, or registered trade marks of their respective owners.

Supporting documents

It is intended that this guide supplements information provided by the following publications:

- RMI-Q radio machine interface installation guide (H-5687-8504);
- RMP60 radio machine probe installation guide (H-5742-8504);
- RMP600 high accuracy radio machine probe installation guide (H-5312-8503);
- RMP40 radio machine probe installation guide (H-5480-8504);
- RLP40 radio lathe probe installation guide (H-5627-8504);
- RTS radio tool setter installation guide (H-5646-8504).

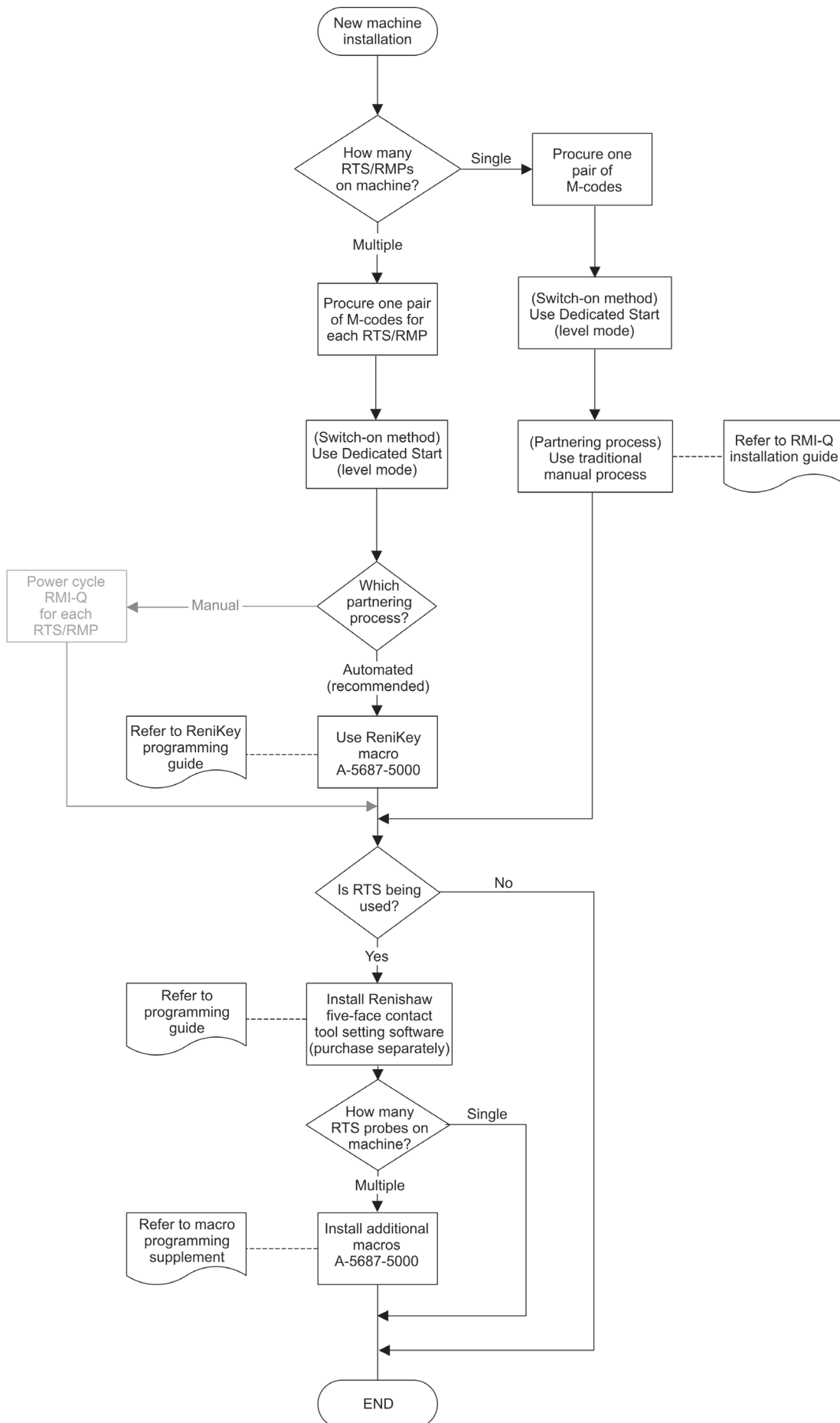
Introduction

The purpose of this guide is to assist the machine tool builder to plan the integration of an RMI-Q system onto a new machine.

A process flow diagram enables you to consider the following:

- availability of M-codes;
- switch-on method;
- partnering procedure selection of radio machine probes (RTS/RMPs);
- application software.

RMI-Q installation process (new machine integration)



RenKey

RMI-Q acquisition is achieved by either performing manual procedures or by the application of ReniKey. The application of ReniKey is the recommended method for the acquisition of multiple RTS/RMPs.

RMI-Q support software (Renishaw part no. A-5687-5000) is available from your local Renishaw distributor/office. This product provides controller specific ReniKey macros for both Siemens and Heidenhain CNC machine tool controllers. A generic ReniKey macro is also provided for use with most other CNC machine tool controller types.

Controller type	Programming guide
Generic	H-5687-8601
Heidenhain	H-5687-8602
Siemens	H-5687-8603

RTS application

The application of a single RTS probe requires Renishaw five-face contact tool setting software, which must be purchased separately.

In applications where multiple RTS probes are to be installed onto the same machine, an additional macro is also required to control multiple calibration data and M-codes for turning each RTS on and off.

RMI-Q support software (Renishaw part no. A-5687-5000) provides two macros for the application of multiple RTS probes. One macro is specific to Siemens CNC machine tool controllers and the other macro is suitable for most other controller types. A macro is not required for Heidenhain CNC machine tool controllers.

Controller type	Refer to macro programming supplement
Siemens	H-2000-6679
Other	H-2000-6678

Renishaw plc
New Mills, Wotton-under-Edge,
Gloucestershire, GL12 8JR
United Kingdom

T +44 (0)1453 524524
F +44 (0)1453 524901
E uk@renishaw.com
www.renishaw.com

RENISHAW 
apply innovation™

**For worldwide contact details,
please visit our main web site at
www.renishaw.com/contact**



H - 5687 - 8100 - 01