

HPMA and TSI 3 / TSI 3-C motorised arm and interface



HPMA specification

Variant		Standard rear exit	Standard side exit
Principal application		Tool measuring and broken tool detection on 2-axis and 3-axis CNC lathes	
Transmission type		Hard-wired transmission	
Weight		≈ 5 kg (176 oz)	
Probe		RP3 ¹	
Compatible interfaces		TSI 3 or TSI 3-C	
Cable (arm to interface)	Type	Ø7.3 mm (0.29 in), 5-core screened cable, each core is 0.75 mm ²	Ø4.35 mm (0.17 in), 4-core screened cable, each core is 0.22 mm ²
	Length	2 m (6.5 ft), 5 m (16.4 ft), 10 m (32.8 ft)	7 m (22.9 ft)
Sense directions		±X, ±Y, +Z (refer to page 2 , “HPMA dimensions”, for axes definition)	
Typical positional repeatability ^{2,3}		5 µm (197 µin) 2σ X/Y (arms for machines with 6 in to 15 in chucks) 8 µm (315 µin) 2σ X/Y (arms for machines with 18 in to 24 in chucks)	
Stylus trigger force ^{4,5} XY low force XY high force +Z direction		1.5 N, 153 gf (5.4 ozf) 3.5 N, 357 gf (12.59 ozf) 12 N, 1224 gf (43.16 ozf)	
Arm sweep motion		Motorised	
Arm sweep time		Typically 3 seconds in each direction	
Arm sweep angle		90°	
Mounting		M8 bolts (× 3)	
Probe pocket mounting		M6 bolts (× 2)	
Environment	IP rating	IPX6 and IPX8, BS EN 60529:1992+A2:2013	
	Storage temperature	-25 °C to +70 °C (-13 °F to +158 °F)	
	Operating temperature	+5 °C to +55 °C (+41 °F to +131 °F)	

¹ Where the RP3 is to be used in the probe's Z axis, a five-faced stylus is available to order from the Renishaw Online store at www.renishaw.com/shop.

² Test conditions: Stylus length: 22 mm (0.87 in)
Stylus velocity: 36 mm/min (1.42 in/min)

³ Repeatability performance is not specified in the arm rotational axis. Refer to **page 2**, “HPMA dimensions”, to identify this axis.

⁴ Trigger force, which is critical in some applications, is the force exerted on the stylus by the tool when the probe triggers. The maximum force applied will occur after the trigger point (overtravel). The force value depends on related variables including measuring speed and machine deceleration.

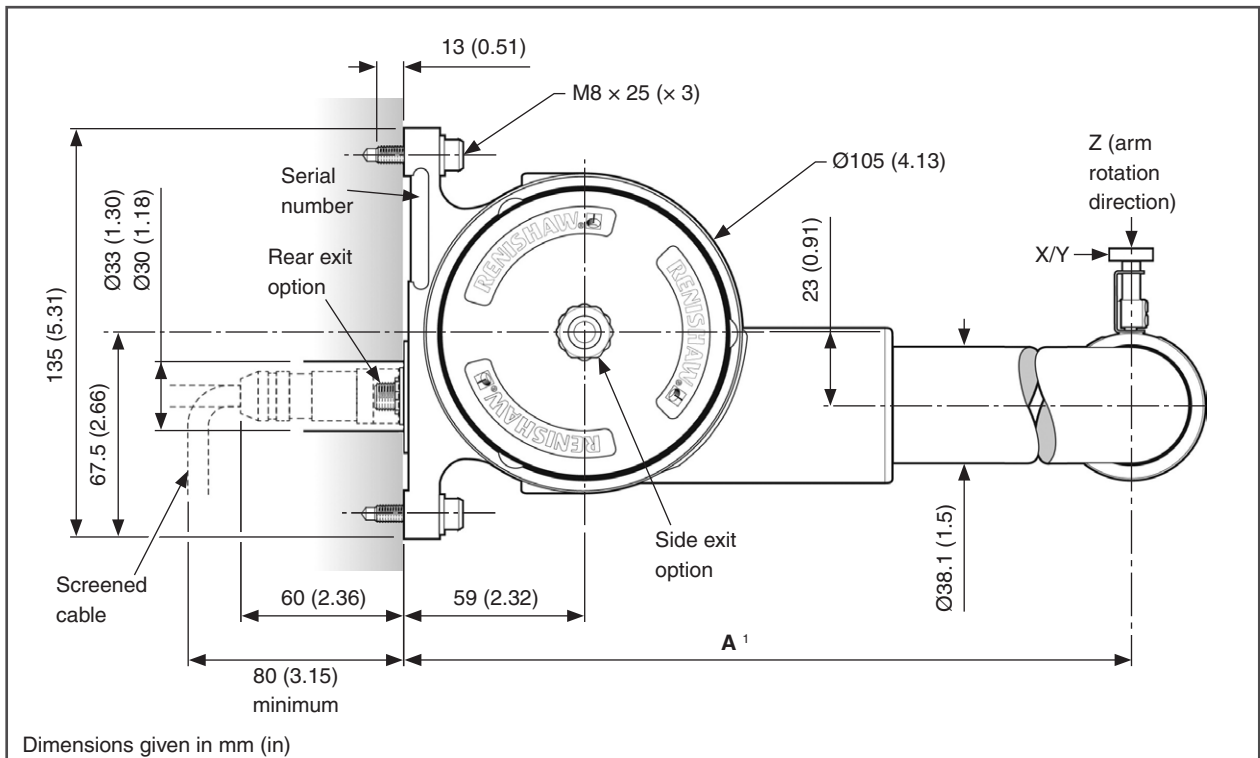
⁵ These are the factory settings; manual adjustment is not possible.

TSI 3 / TSI 3-C specification

Variant	TSI 3	TSI 3-C
Principal application	Input and output interfacing between the HPMA arm and the host CNC controller	
Weight	≈ 0.2 kg (7 oz)	
Mounting	DIN rail preferred; alternatively M4 screw (× 2)	
I/O connector type	25-way D-sub, 4-40 UNC (× 2)	
Inputs	Opto isolated drive commands and probe inhibit command, 15 Vdc to 30 Vdc	
Outputs	OCT active high for ARO, MRO and X+, X-, Z+, Z- (machine axes)	Voltage-free SSRs for probe status, arm ready and arm stowed
Four-wire I/O probe option (for example, Fanuc automatic length measurement input XAE, ZAE)	Four internally pulled down active high inputs, four OCT active high outputs	N/A
Power supply requirement	Voltage	24 Vdc
	Current	3 A
Environment	IP rating	IP20, BS EN 60529:1992+A2:2013
	Storage temperature	-25 °C to +70 °C (-13 °F to +158 °F)
	Operating temperature	+5 °C to +55 °C (+41 °F to +131 °F)

HPMA dimensions

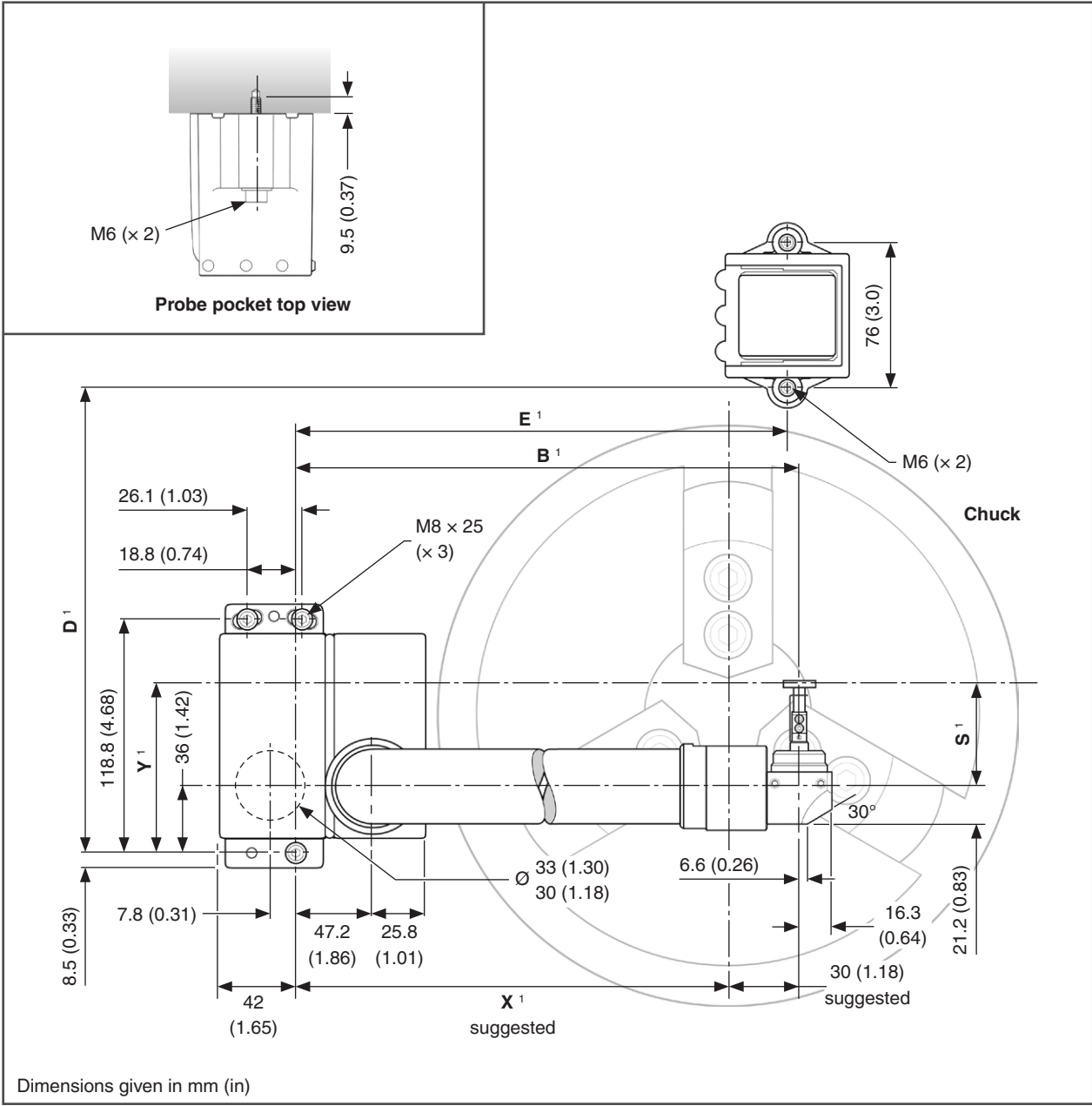
The arm and probe holder arrangement shown is for illustration purposes only.



¹ A range of standard sizes are available, with either a rear or side exit connection. See page 4, "Standard arms dimension table", for further information.

HPMA mounting details

The arm and probe holder arrangement shown is for illustration purposes only.



¹ A range of standard sizes are available, with either a rear or side exit connection. See page 4, "Standard arms dimension table", for further information.

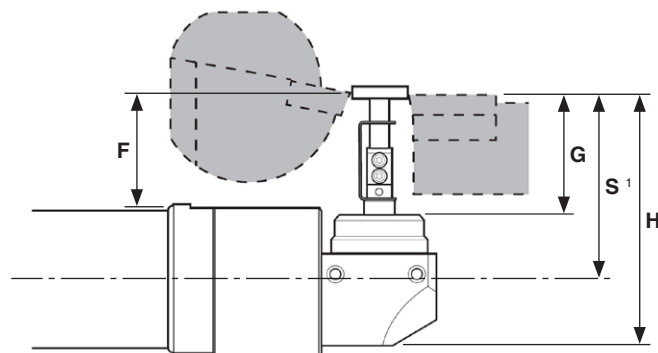
Standard arms dimension table

Chuck size	Tooling size	Arm size		D	E	S ¹	X	Y
		A	B					
6 in	16 mm	250	219.2	212	212	35.7 (1.40)	189.2	71.7 (2.82)
	20 mm	(9.84)	(8.63)	(8.35)	(8.35)	41 (1.61)	(7.45)	77 (3.03)
	25 mm					51 (2.01)		87 (3.42)
	32 mm					56 (2.20)		92 (3.62)
8 in	16 mm	286	249.2	248	242	35.7 (1.40)	219.2	71.7 (2.82)
	20 mm	(11.26)	(9.81)	(9.76)	(9.53)	41 (1.61)	(8.63)	77 (3.03)
	25 mm					51 (2.01)		87 (3.42)
	32 mm					56 (2.20)		92 (3.62)
10 in	16 mm	335	298.2	297	291	35.7 (1.40)	268.2	71.7 (2.82)
	20 mm	(13.19)	(11.74)	(11.69)	(11.46)	41 (1.61)	(10.56)	77 (3.03)
	25 mm					51 (2.01)		87 (3.42)
	32 mm					56 (2.20)		92 (3.62)
	40 mm					61 (2.40)		97 (3.82)
12 in	16 mm	368	298.2	330	291	35.7 (1.40)	268.2	71.7 (2.82)
	20 mm	(14.49)	(11.74)	(12.99)	(11.46)	41 (1.61)	(10.56)	77 (3.03)
	25 mm					51 (2.01)		87 (3.42)
	32 mm					56 (2.20)		92 (3.62)
	40 mm					61 (2.40)		97 (3.82)
	50 mm					71 (2.80)		107 (4.21)
15 in	20 mm	400	343.2	362	336	41 (1.61)	313.2	77 (3.03)
	25 mm	(15.75)	(13.51)	(14.25)	(13.23)	51 (2.01)	(12.33)	87 (3.42)
	32 mm					56 (2.20)		92 (3.62)
	40 mm					61 (2.40)		97 (3.82)
	50 mm					71 (2.80)		107 (4.21)
18 in	25 mm	469	383.2	431	376	51 (2.01)	353.2	87 (3.42)
	32 mm	(18.46)	(15.09)	(16.97)	(14.80)	56 (2.20)	(13.91)	92 (3.62)
	40 mm					61 (2.40)		97 (3.82)
	50 mm					71 (2.80)		107 (4.21)
24 in	25 mm	555	458.2	517	451	51 (2.01)	428.2	87 (3.42)
	32 mm	(21.85)	(18.04)	(20.35)	(17.76)	56 (2.20)	(16.86)	92 (3.62)
	40 mm					61 (2.40)		97 (3.82)
	50 mm					71 (2.80)		107 (4.21)

Dimensions given in mm (in)

¹ Stylus height, S, is adjustable.

Stylus dimensions by tool size

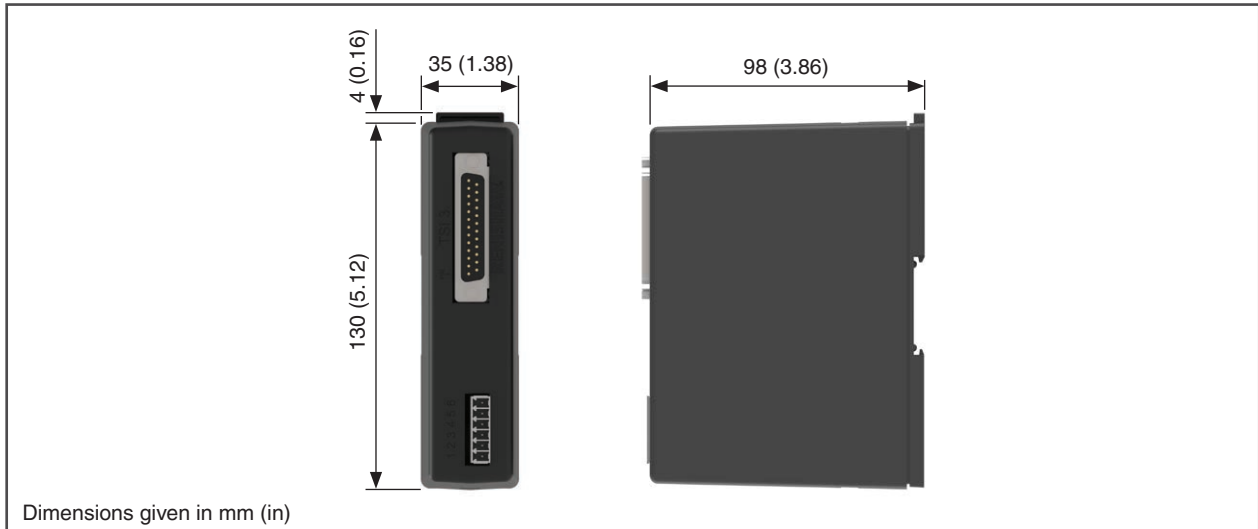


¹ Stylus height, S, is adjustable.

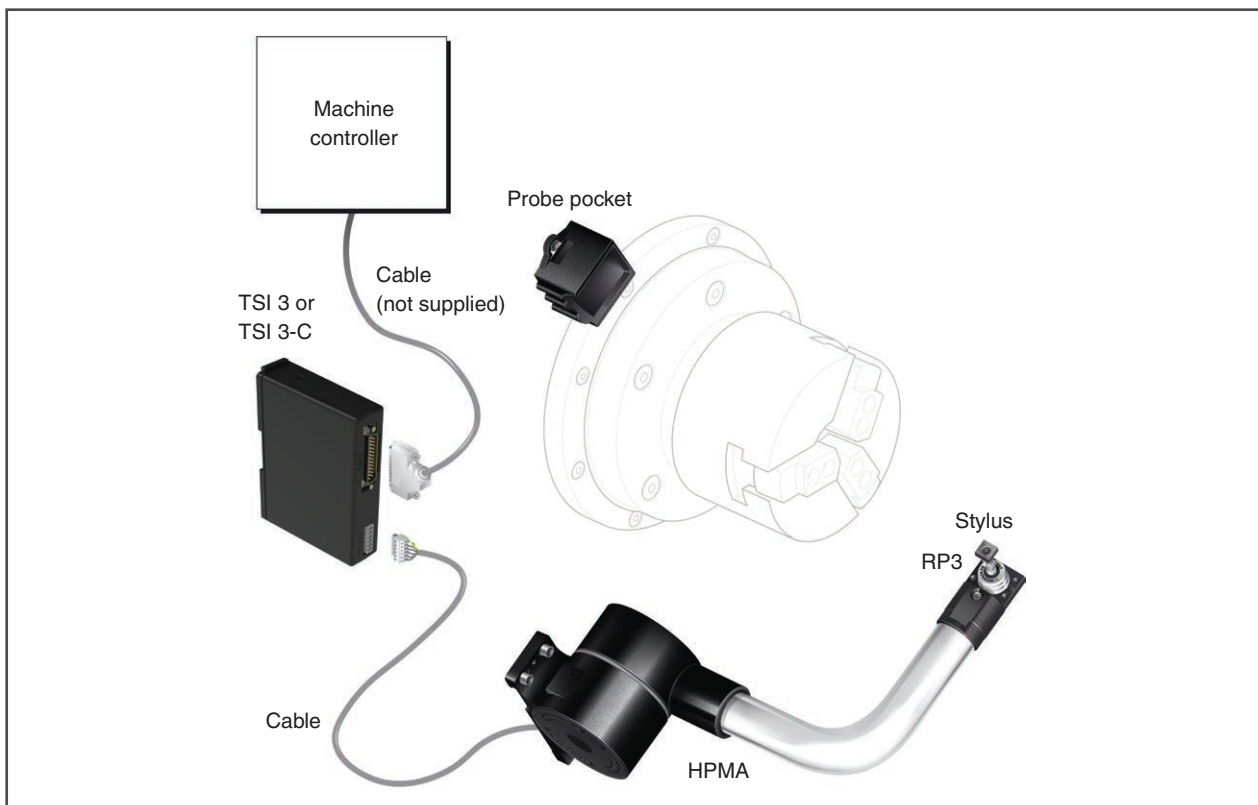
Tooling size	Stylus length	F	G	H	S
16 mm	14.2 (0.56)	14.2 (0.56)	19.1 (0.75)	56.9 (2.24)	35.7 (1.40)
20 mm	19.5 (0.77)	19.5 (0.77)	24.4 (0.96)	62.2 (2.45)	41 (1.61)
25 mm	29.5 (1.16)	29.5 (1.16)	34.4 (1.35)	72.2 (2.84)	51 (2.01)
32 mm	34.5 (1.36)	34.5 (1.36)	39.4 (1.55)	77.2 (3.04)	56 (2.20)
40 mm	39.5 (1.56)	39.5 (1.56)	44.4 (1.75)	82.2 (3.24)	61 (2.40)
50 mm	49.5 (1.95)	49.5 (1.95)	54.4 (2.14)	92.2 (3.63)	71 (2.80)

Dimensions given in mm (in)

TSI 3 and TSI 3-C dimensions



Typical system



www.renishaw.com/hpma

#renishaw

+44 (0) 1453 524524

uk@renishaw.com

© 2002–2023 Renishaw plc. All rights reserved. This document may not be copied or reproduced in whole or in part, or transferred to any other media or language by any means, without the prior written permission of Renishaw.

RENISHAW® and the probe symbol are registered trade marks of Renishaw plc. Renishaw product names, designations and the mark 'apply innovation' are trade marks of Renishaw plc or its subsidiaries. Other brand, product or company names are trade marks of their respective owners.

WHILE CONSIDERABLE EFFORT WAS MADE TO VERIFY THE ACCURACY OF THIS DOCUMENT AT PUBLICATION, ALL WARRANTIES, CONDITIONS, REPRESENTATIONS AND LIABILITY, HOWSOEVER ARISING, ARE EXCLUDED TO THE EXTENT PERMITTED BY LAW. RENISHAW RESERVES THE RIGHT TO MAKE CHANGES TO THIS DOCUMENT AND TO THE EQUIPMENT, AND/OR SOFTWARE AND THE SPECIFICATION DESCRIBED HEREIN WITHOUT OBLIGATION TO PROVIDE NOTICE OF SUCH CHANGES.

Renishaw plc. Registered in England and Wales. Company no: 1106260. Registered office: New Mills, Wotton-under-Edge, Glos, GL12 8JR, UK.

Part no.: H-2000-2037-07-A

Issued: 05.2023