




OSP60 battery cap gasket replacement

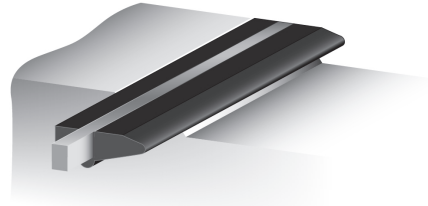
<p>1</p> 	<p>2</p>  <p>NOTE: Following removal, store the battery cassette/batteries in a safe place and protect from contamination.</p>	<p>3</p>  <p>NOTE: Remove the gasket by hand only. This is best achieved by first peeling both ends of the gasket from the housing before pulling it free.</p>
<p>4</p>  <p>Lint free polyester cleaning swab</p> <p>NOTE: During cleaning, take care to ensure that debris does not enter the probe body. Return the probe to Renishaw if the gasket location is found to be damaged.</p>	<p>5</p>  <p>Battery cap gasket kit (Renishaw part no. A-5465-2300)</p> <p>Remove the new gasket from its packaging and ensure it has not become contaminated in transit. If contamination is found, wipe the gasket clean using a lint-free cloth. If necessary, reapply lubricant removed by the cleaning process.</p> <p>NOTES: The gasket is supplied pre-lubricated. If the gasket is found to have dried out in storage, lubricate its outer edge with Hellerine lubricant or equivalent. The gasket is supplied with an integral steel support ring. This must not be removed.</p>	

6

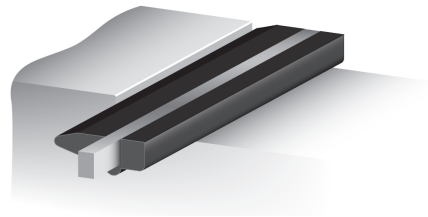


Ensuring that the flat face of the new gasket is facing inwards, press the gasket into position by applying an even pressure on each side.

Correct installation



Incorrect installation



7



NOTE: It is important that the top tapered edge is not twisted or deformed. If the gasket is not seated evenly, repeat steps 3 through 7.

Working from one end, apply a firm pressure to the gasket's outer edge to ensure the complete outer bead is fully seated.

8



Replace the battery cassette and lock in position. If the cassette is difficult to fit, or a high locking torque is experienced, this could indicate an incorrectly fitted gasket. Remove and replace the gasket by repeating steps 3 through 8.

www.renishaw.com/contact



#renishaw

+44 (0) 1453 524524

uk@renishaw.com

© 2014–2023 Renishaw plc. All rights reserved. This document may not be copied or reproduced in whole or in part, or transferred to any other media or language by any means, without the prior written permission of Renishaw.

RENISHAW® and the probe symbol are registered trade marks of Renishaw plc. Renishaw product names, designations and the mark 'apply innovation' are trade marks of Renishaw plc or its subsidiaries. Other brand, product or company names are trade marks of their respective owners.

WHILE CONSIDERABLE EFFORT WAS MADE TO VERIFY THE ACCURACY OF THIS DOCUMENT AT PUBLICATION, ALL WARRANTIES, CONDITIONS, REPRESENTATIONS AND LIABILITY, HOWSOEVER ARISING, ARE EXCLUDED TO THE EXTENT PERMITTED BY LAW. RENISHAW RESERVES THE RIGHT TO MAKE CHANGES TO THIS DOCUMENT AND TO THE EQUIPMENT, AND/OR SOFTWARE AND THE SPECIFICATION DESCRIBED HEREIN WITHOUT OBLIGATION TO PROVIDE NOTICE OF SUCH CHANGES.

Renishaw plc. Registered in England and Wales. Company no: 1106260. Registered office: New Mills, Wotton-under-Edge, Glos, GL12 8JR, UK.

Part no.: H-5465-8532-02-B

Issued: 08.2023