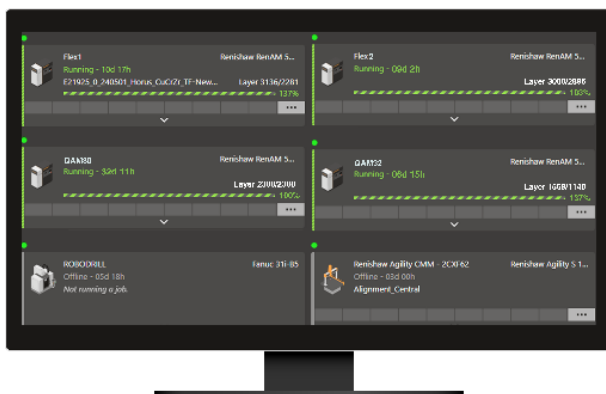


Renishaw Central for additive manufacturing

Visualise, analyse and guide your manufacturing operations

Renishaw Central is a factory floor monitoring solution that collects and displays process data from your fleet of machines. Production managers can use these insights to identify, analyse, correct and predict process errors before they occur.

Renishaw Central supports connections with Renishaw's RenAM 500 series of metal additive manufacturing systems. You can analyse the performance and utilisation of multiple connected devices, which also includes CMMs, Equator™ gauging systems and machine tool probing systems.



Advantages of Renishaw Central

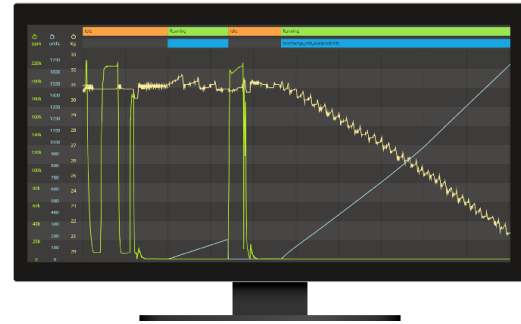
- Having all your data in one place offers improved visibility of your metrics
- Tracking your manufacturing data highlights process shortcomings
- Provides your production and quality managers with the data they need to make effective and optimised machine planning decisions



Easily analyse the job performance and utilisation of your machines

Renishaw Central uses real-time data to monitor your machines and product quality, providing insights into finished jobs, successes, failures, and cycle times. This provides a bird's-eye view of the performance of your fleet of machines.

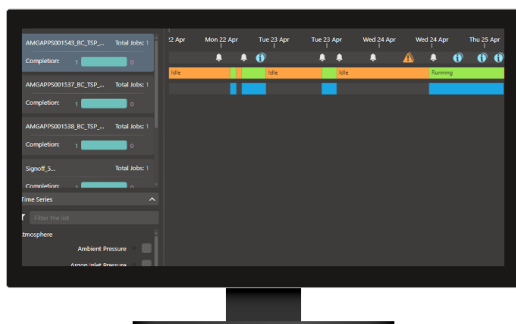
These features help production managers to identify issues quickly, and operators no longer need to manually inspect each machine.



Keep your machine running at optimal performance

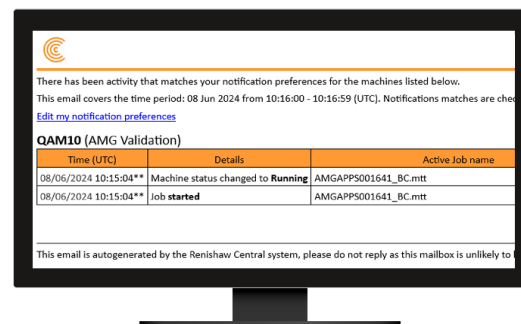
Renishaw Central provides status and sensor information about your AM systems. Temperature, oxygen levels, argon levels, powder levels, filter status, coolant flow rate and other critical parameters are displayed.

This data provides valuable insight to help decrease machine downtime. You can identify when a machine needs a powder top-up, filter change, or whether fluctuations in environmental conditions impact part quality.



Traceability across multiple jobs and machines for production consistency

Renishaw Central stores historical process data from AM builds, downstream machining operations and CMM inspection. This data provides a deep process understanding and true visibility of the manufacturing process.




Receive reactive notifications about your build

Activate email notifications to be instantly alerted about machine or job status changes, attention requirements or idle machines. This allows production managers to address potential faults before they affect the production process.

www.renishaw.com/central

 #renishaw

 +44 1453 524524

 uk@renishaw.com

© 2024 Renishaw plc. All rights reserved. RENISHAW® and the probe symbol are registered trade marks of Renishaw plc. Renishaw product names, designations and the mark 'apply innovation' are trade marks of Renishaw plc or its subsidiaries. Other brand, product or company names are trade marks of their respective owners. Renishaw plc. Registered in England and Wales. Company no: 1106260. Registered office: New Mills, Wotton-under-Edge, Glos, GL12 8JR, UK.

WHILE CONSIDERABLE EFFORT WAS MADE TO VERIFY THE ACCURACY OF THIS DOCUMENT AT PUBLICATION, ALL WARRANTIES, CONDITIONS, REPRESENTATIONS AND LIABILITY, HOWSOEVER ARISING, ARE EXCLUDED TO THE EXTENT PERMITTED BY LAW.

Part no.: H-5800-6883-01-A