

Metrology fixture tables

What is a metrology table and what is it used for?

Metrology fixture tables are used as a base to fixture workpieces prior to them being inspected and measured. Compatible with any portable CMM, white light or laser system they give you the ability to move about your workshop or metrology inspection area with ease.

Improve your measurement quality

One of the key advantages of a metrology fixture table is that it improves your measurement quality. Eliminate the sources of error and variability that can compromise your results, such as human error, environmental factors and inconsistent set-ups.

They provide stable, consistent and standardised platforms for mounting and measuring your workpieces, ensuring that you get reliable and accurate data every time.

Increase your confidence in your measurements and deliver high-quality products and services to your customers.

Increase your productivity and efficiency

By using a metrology fixture table, you can save time and resources that would otherwise be spent on setting up, adjusting, and repositioning your workpieces and measurement equipment.

A metrology fixture table allows you to mount and secure your workpieces in the desired position and orientation and adjust them as needed quickly and easily. Modular and reusable set-ups can be replicated and reproduced for different workpieces and measurements; reducing the need for multiple set-ups and streamlining your workflow.

Optimise your measurement space and reduce the clutter and interference that can affect your measurement quality. Improve your efficiency and reduce costs.

Buy now



www.renishaw.com/fixturetable



#renishaw

Benefits of metrology tables

Cost effective

Standardised tables provide a cost effective option with a faster delivery time.

Tables are available with shelves and drawers on request.

If our standard option doesn't suit your needs we can design and supply custom tables.

Contact us to discuss your requirements.

Easy set-up

Metrology tables come fully assembled.

Simply unpack and start measuring.

Move easily

Specially designed casters make the table easy to move and position. They also allow for levelling on uneven surfaces.

Heavy workpieces

Designed to mount heavy workpieces with no base plate flexing or distorting.

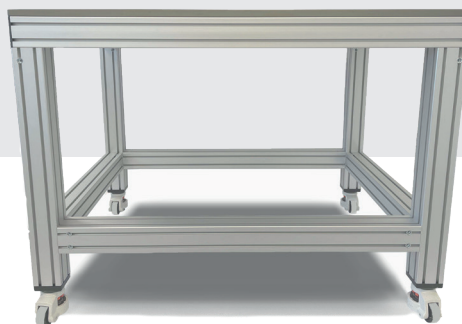
The fixturing top plate is secured to the metrology table frame with mounting holes. This adds to the stability and rigidity of the table.

Durability

Fixture plates are precision ground and hard coat anodised to resist scratching and increase durability.

Reproduce set-ups

Hole spacing is set to 30 mm for M8 threads, 25 mm for M6 and 1 in for 1/4 20 threads. This means you need less adjustable components and can easily reproduce set-ups.



Enjoy a complimentary 12-month subscription to our innovative 3D modelling software, FixtureBuilder.

This offer is included with the purchase of every table.

www.renishaw.com/contactus



#renishaw

UK ☎ +44 (0) 1453 524524

✉ uk@renishaw.com

USA ☎ +1 847 286 9953

✉ usa@renishaw.com

© 2018-2025 Renishaw plc. All rights reserved. RENISHAW® and the probe symbol are registered trade marks of Renishaw plc. Renishaw product names, designations and the mark 'apply innovation' are trade marks of Renishaw plc or its subsidiaries. Other brand, product or company names are trade marks of their respective owners. Renishaw plc. Registered in England and Wales. Company no: 1106260. Registered office: New Mills, Wotton-under-Edge, Glos, GL12 8JR, UK.

WHILE CONSIDERABLE EFFORT WAS MADE TO VERIFY THE ACCURACY OF THIS DOCUMENT AT PUBLICATION, ALL WARRANTIES, CONDITIONS, REPRESENTATIONS AND LIABILITY, HOWSOEVER ARISING, ARE EXCLUDED TO THE EXTENT PERMITTED BY LAW.

Part no.: H-1000-9931-05-A