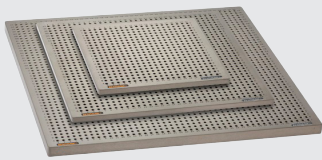
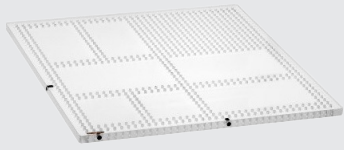


# Fixturing for CMM, Equator™ gauges and vision systems

## Base components



CMM plates (Customisable up to 3 m × 1.5 m)



Vision plates (Acrylic for backlighting)



Metrology tables (For portable applications)



QuickLoad™ (Attach to any CMM)



R-T- (Towers to build vertically)

## Standoffs



R-S- (M4 aluminium for vision, M6, M8, 1/4-20 Steel. Sizes from 6 mm to 25 mm diameter and 5 mm to 150 mm length)



R-SP- (Pins for resting workpieces against)



R-SA- (Standoff adaptors to convert thread types)

## Magnets



R-M- (Flat magnets for clamping)



R-MP (Pins for resting workpieces against)



R-MV (V magnets for cylindrical workpieces)

### Thread types

Renishaw offer

M6, M8 and 1/4-20 for CMM and tactile

M4 for vision and more delicate applications

### Materials

303 stainless for long lifetime and ensuring reliable fixtures

Aluminium for less wearing on workpieces

Soft materials, like plastics and rubber tip to ensure no marking

## Adjustables



R-AJ (Adjustable jackstand to reach heights outside of stand off range)



R-AS (Adjustable slides allow positioning outside of the base plate grids)

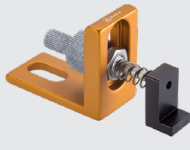


R-APJ (Adjustable pivot joints) R-PCA (Adjustable angle plate)

## Clamps



R-CT tension clamps, R-CTT soft tipped, R-CW wire tension clamp, R-CWT wire soft clamp (For securing workpieces during inspection)



R-CSP Screw pusher clamp, R-CP spring pusher clamp (Locate and clamp workpieces)



R-CSPS (Spring pusher clamp for round or sheet)

Scan to explore our full range

## Vices and chucks



R-CMV (Mini vice) R-CVM (Micro vice)



R-CJR (Rotating 3-jaw chuck)



R-CJ (3-jaw chuck)



R-CRAV (Rotational angle vice)



store.renishaw.com

#renishaw