

Manufacturing excellence

Common sense manufacturing in spacious 80,000ft² machine hall.

A new machine shop at Stonehouse, Gloucestershire, houses over 70 CNC machine tools, plus the latest technologies for anodising, automatic deburring and part cleaning, producing over 300,000 parts each month.

The experiences gained as a manufacturer give valuable feedback to designers of both styli and probe systems.

At our main Assembly facility in Woodchester, Gloucestershire, UK, the styli production cell is equipped with dedicated machinery for styli assembly, all designed specifically to

Renishaw's exacting standards. These include a unique machine for press-fit joints that eliminates the need for adhesives, a pad printing machine that adds a logo to the stylus stem to identify genuine Renishaw styli, and an ASAM (automated stylus assembly machine) which is used for the production of our grade 3 styli range.

A CMM fitted with automated Renishaw sensors is used to inspect all finished styli, giving you the confidence that our styli meet specification and are of the highest quality.



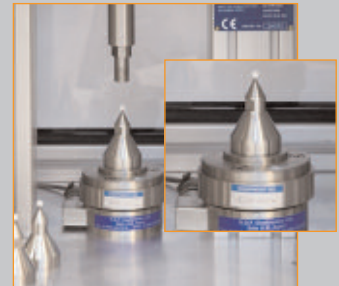
Pad printing



ASAM machine



Special styli press



Special styli



CNC machines

Renishaw applies innovation to provide solutions to your problems

Renishaw is an established world leader in metrology, providing high performance, cost-effective solutions for measurement and increased productivity. A worldwide network of subsidiary companies and distributors provides exceptional service and support for its customers.

Renishaw designs, develops and manufactures products which conform to ISO 9001 standards.

Renishaw provides innovative and cost-effective solutions using the following products:

- **Probe systems for inspection on CMMs (co-ordinate measuring machines).**
- **Systems for job set-up, toolsetting and inspection on machine tools.**
- **Scanning and digitising systems.**
- **Laser and automated ballbar systems for performance measurement and calibration of machines.**
- **Encoder systems for high accuracy position feedback.**
- **Spectroscopy systems for non-destructive material analysis in laboratory and process environments.**
- **Styli for inspection and tool setting probes.**
- **Customised solutions for your applications.**

Renishaw offices worldwide

Australia

T +61 3 9521 0922
E australia@renishaw.com

Austria

T +43 (0) 2236 379790
E austria@renishaw.com

Brazil

T +55 11 4195 2866
E brazil@renishaw.com

The People's Republic of China

T +86 10 8448 5306
E beijing@renishaw.com

Canada

T +1 905 828 0104
E canada@renishaw.com

Czech Republic

T +420 548 216 553
E czech@renishaw.com

France

T +33 1 64 61 84 84
E france@renishaw.com

Germany

T +49 (0) 7127 981-0
E germany@renishaw.com

Hong Kong

T +852 2753 0638
E hongkong@renishaw.com

Hungary

T +36 23 502 183
E hungary@renishaw.com

India

T +91 80 25320 144
E india@renishaw.com

Israel

T +972 4 953 6595
E israel@renishaw.com

Italy

T +39 011 966 10 52
E italy@renishaw.com

Japan

T +81 3 5366 5315 (or 5324)
E japan@renishaw.com

Malaysia

T +60 3 5631 4420
E malaysia@renishaw.com

The Netherlands

T +31 76 543 11 00
E benelux@renishaw.com

Poland

T +48 22 577 1180
E poland@renishaw.com

Russia

T +7 495 231 1677
E russia@renishaw.com

Singapore

T +65 6897 5466
E singapore@renishaw.com

Slovenia

T +386 (1) 527 2100
E mail@rls.si

South Korea

T +82 2 2108 2830
E southkorea@renishaw.com

Spain

T +34 93 663 3420
E spain@renishaw.com

Sweden

T +46 (0)8 584 90 880
E sweden@renishaw.com

Switzerland

T +41 55 415 50 60
E switzerland@renishaw.com

Taiwan

T +886 4 2251 3665
E taiwan@renishaw.com

Thailand

T +66 2746 9811
E thailand@renishaw.com

Turkey

T +90 (216) 380 92 40
E turkiye@renishaw.com

UK (Head Office)

T +44 (0)1453 524524
E uk@renishaw.com

USA

T +1 847 286 9953
E usa@renishaw.com

For all other countries

T +44 1453 524524
E international@renishaw.com

Understanding genuine Renishaw styli



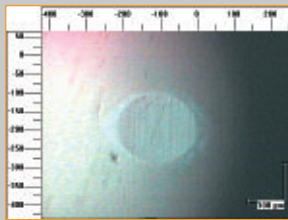
Research and Development

Facilities investment enables high performance and continuous improvement.

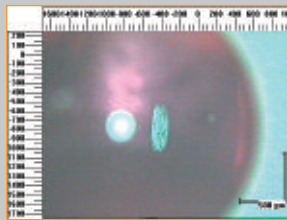
Renishaw has always been committed to research and development and this is especially true for its probe styli. We constantly strive to optimise the performance of styli in measurement applications, with a specific focus on material development and assembly methods.

A fundamental part of this work is the rigorous testing of component parts and life-cycle application testing of styli assemblies, achieved by using a range of sophisticated metrology equipment.

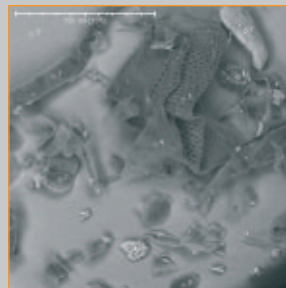
These include a roundness machine which allows fast, repetitive measurement of styli balls, ensuring that we are able to assemble our styli using only the very best grade 3 and grade 5 sphericity balls. The same machine is also used for ongoing research into ball material selection for contact scanning applications. After rigorous testing on different surface materials, styli balls are magnified and measured, quickly identifying any material pickup or abrasive wear that has occurred. This allows us to give clear recommendations to our customers based on their specific applications.



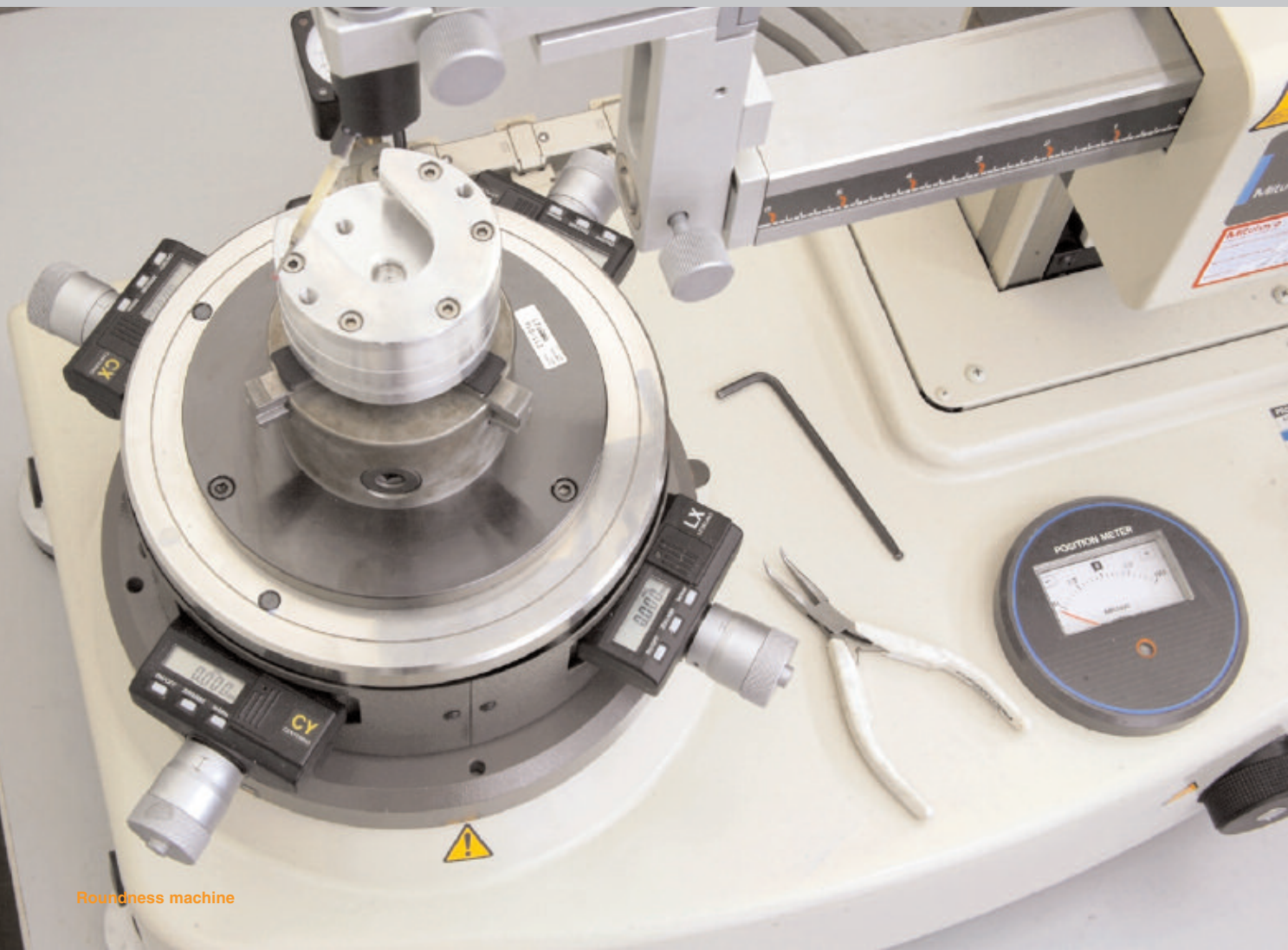
Wear on ball



Pick up on ball



Picked up debris - 1 x 300



Roundness machine

Design

Vast experience and latest systems deliver high level design solutions.

A team of highly experienced design engineers focuses on the design and development of both standard and custom styli. All designers use the latest CAD systems and have access to the latest rapid prototyping equipment housed within Renishaw's Rapid Manufacturing Centre.

A key strength is the knowledge and experience gained from manufacturing applications worldwide over more than 30 years. The team maintains close liaison with designers of

Renishaw's probes for co-ordinate measuring machines (CMMs) and CNC machine tools, ensuring that styli designs keep pace with the latest developments in probe technology.

So, whatever your application, you can be assured that our designers will produce the right stylus to suit your needs.



Custom design styli



Custom design styli



Custom design styli



Revo testing

Service and support

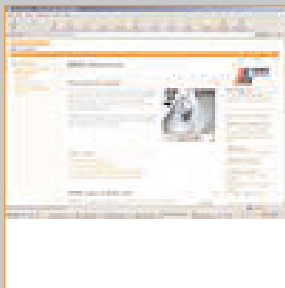
Extensive capacity enables in-stock availability and fast order turnaround.

Renishaw's expansion over more than 30 years has always been accompanied by investment in a worldwide sales and support network, which today includes offices in more than 30 countries, plus a global network of distributors and agents. The benefit to our customers is that at any time, there are in excess of 100,000 styli held in stock locations around the world, ensuring rapid local delivery.

Our global presence is further enhanced by product websites and literature exists in multiple languages. We exhibit at over

100 global events each year, giving customers further opportunities to discuss their manufacturing issues first-hand.

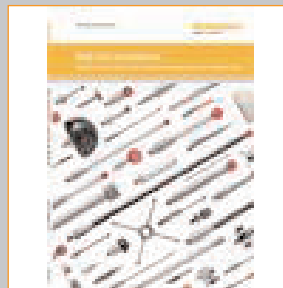
Finally, we have earned an enviable reputation for our commitment to customer care and support. Should technical advice be required, or a problem arise, our global network of staff is always available to offer advice and recommend a suitable replacement.



Product websites



Global stock



Multi-lingual literature



Worldwide locations