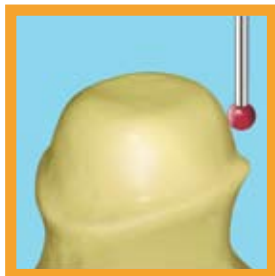
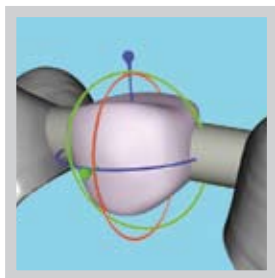


Dental scanning solutions



Scanning



CAD

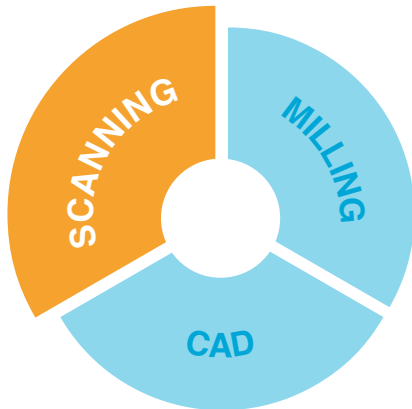


Milling



incise™
precision fit ceramics

Dental scanning solutions



Increase productivity and introduce process control

Designed and manufactured by Renishaw, a recognised leader in metrology, the **incise™** ultra-compact scanning machine is a significant breakthrough in affordable, automated 3D digitising.

Designed specifically for the dental industry, the machine's low-force scanning probe provides the ability to scan complex surfaces, with no damage caused to stone or wax parts.

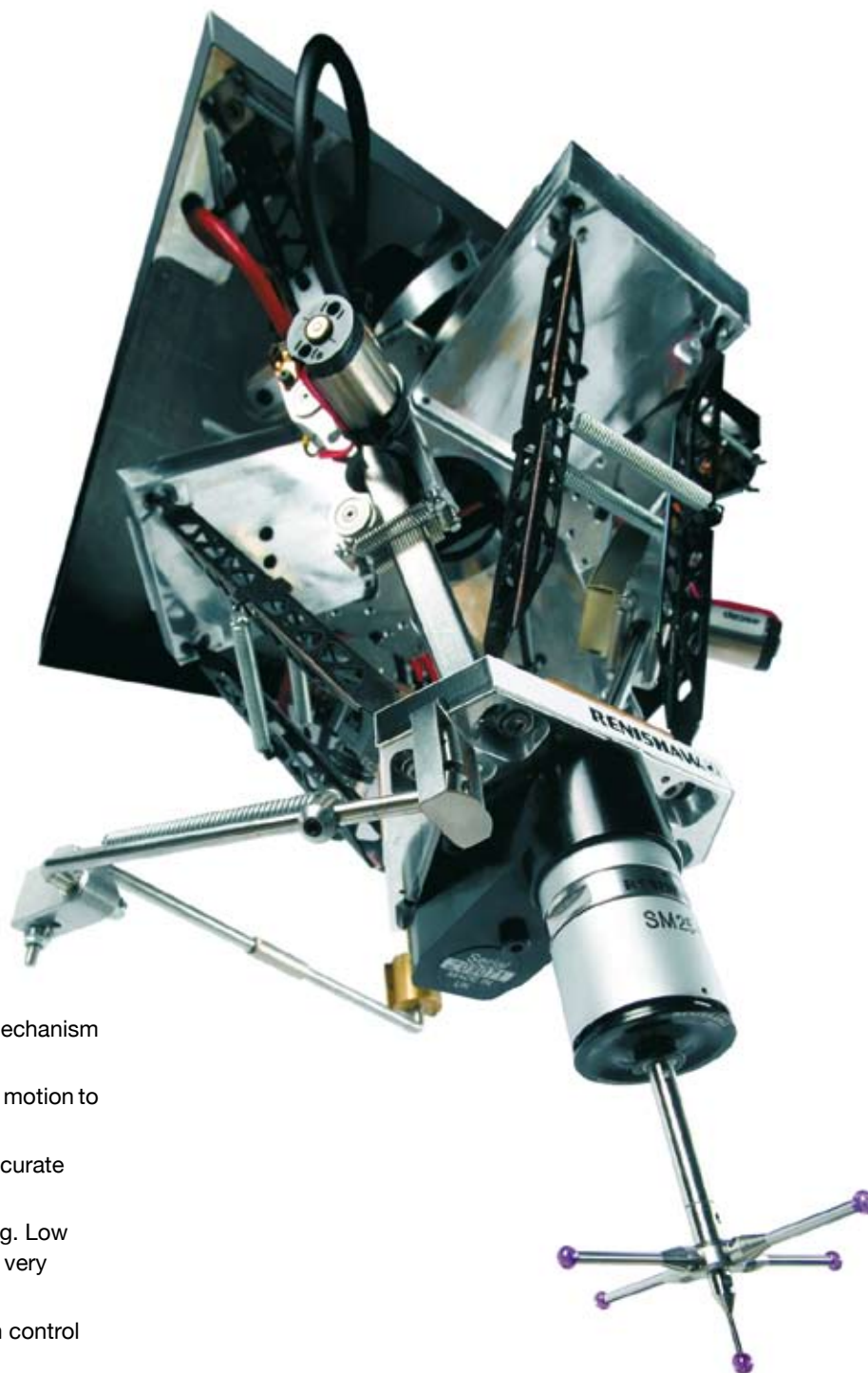
incise™ scanner specification

Measuring envelope	90 mm dia x 45 mm high
Overall machine dimensions	535 mm (h) x 290 mm (w) x 400 mm (d)
Weight	16.5 kg
Encoder resolution	Sub-micron
Probe force	Typically 0.5 N/mm at nominal stylus length
Probe resolution	Sub-micron
Power supply	18 V DC @ 2.5A max
Connection	Standard USB connection
Software	Scan / analysis

Renishaw contact scanning

Scanning probes provide a continuous deflection output that can be combined with the machine's position to derive the location of the surface. When scanning, the probe's stylus tip is brought into contact with the feature and then moved along the surface, gathering data.





TRIACT™ mechanism

The machine is based on the novel TRIACT™ mechanism giving high dynamic performance.

DC motors with direct friction drives control the motion to give fast, precise positioning.

High resolution optical scale encoders give accurate position feedback.

A compact 3-axis probe performs the scanning. Low forces and small scanning deflections provide very accurate data.

High speed controller ensures the best motion control and fast data processing.

Training and support

Renishaw applies innovation to provide solutions to your problems

Renishaw is an established world leader in metrology, providing high performance, cost-effective solutions for measurement and increased productivity. A worldwide network of subsidiary companies and distributors provides exceptional service and support for its customers.

Renishaw designs, develops and manufactures products which conform to ISO 9001 standards.

Renishaw provides innovative solutions using the following products:

- Probe systems for inspection on CMMs (co-ordinate measuring machines).
- Systems for job set-up, tool setting and inspection on machine tools.
- Scanning, digitising and dental systems.
- Laser and automated ballbar systems for performance measurement and calibration of machines.
- Encoder systems for high accuracy position feedback.
- Spectroscopy systems for non-destructive materials analysis in laboratory and process environments.
- Styli for inspection and tool setting probes.
- Customised solutions for your applications.

Renishaw provides sales and technical support to its worldwide customer base. To achieve this, Renishaw's products are sold and supported through wholly owned subsidiary companies in over 30 countries.

It's teams of highly qualified engineers are available to provide you with rapid and comprehensive product, technical, and application support.

This includes:

- global after sales service
- "hands-on" technical training
- seminars and lectures (on and off-site)

www.renishaw.com/dental



Local support



Renishaw's UK dental training centre

Contact details