

Free 30-day trial for new Renishaw touch probe software

Renishaw is offering a free 30-day trial of its latest version of Productivity+, a powerful software package that simplifies the generation of touch probe routines for CNC machine tools.

Productivity+ is available as a plug-in for GibbsCAM and as a CAM-independent, stand-alone package named Active Editor. Both options allow users to program and integrate touch probe routines for job set-up, process control, inspection, tool setting and tool breakage detection at the same time as toolpath generation. The free 30-day no-obligation trial is available for both options of Productivity+.

The latest version of Productivity+, version 1.03, gives additional functionality including XY co-ordinate rotation, 4th axis levelling and three new post-processors for leading controllers.

Co-ordinate rotation in the XY plane (controller dependent)

If a part is not aligned to the machine's axes, this new functionality will compensate for the error and feed the new data back into the CNC control to ensure co-ordinates are correct. Users will see a reduction in part set-up times or fixturing costs.

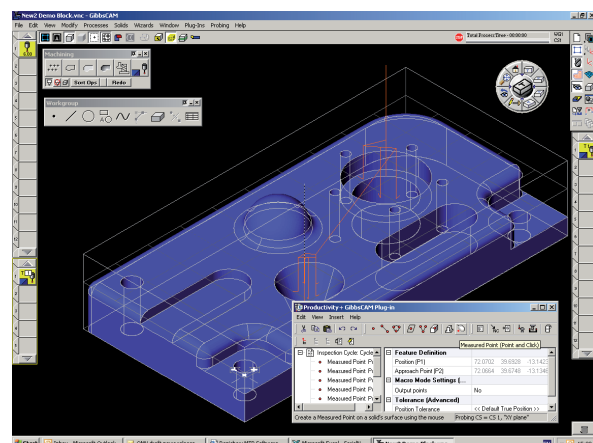
4th axis levelling

Version 1.03 allows users to locate parts on a 4th axis fixture and use the touch probe to automatically find its position. The software automatically updates the work co-ordinate, removing the need to accurately locate the fixture on the 4th axis. No manual intervention is necessary, reducing set-up time and the possibility of error.

New HEIDENHAIN, SIEMENS and MORI SEIKI post processors

Three new post processors have been added to the growing list of supported controllers.

Now, users of Heidenhain, Siemens and the latest Mori Seiki controllers can benefit from both the Productivity+ GibbsCAM plug-in and the Active Editor packages.



Additional features for the GibbsCAM plug-in

In addition to these key enhancements, users of the Productivity+ GibbsCAM plug-in software will benefit from additional new options, including surface normal generation and Tombstone Management System compatibility.

A brand new point-and-click feature available with the GibbsCAM plug-in package will automatically program surface normals, saving huge amounts of time and reducing manual input errors. As the name suggests, users simply point-and-click on the surface of a part and probing co-ordinates will be entered automatically into the probing cycle.

The Productivity+ GibbsCAM plug-in is also fully compatible with the new Tombstone Management System option from Gibbs and Associates. This system significantly accelerates the development of programs for tombstone machining, making multi-part programs simple and efficient to use.

Use a touch probe just like any other tool

Using Productivity+™, the many benefits of probing can be maximised by engineers who are responsible for developing manufacturing processes and who understand the design intent. Machine tool touch probing for process control and inspection therefore becomes a natural part of the engineering process, using the touch probe just like any other tool in the magazine.

The intuitive menus provided within the Productivity+™ software allow effective use of machine tool touch probes on a range of controllers, for users without a detailed knowledge of macro code. The instructions required to control the touch probe are included in the same post-processed file as the toolpath.

Importantly, the benefits of the Productivity+™ GibbsCAM® plug-in and Active Editor are not restricted to new process generation, since existing programs and toolpaths may be imported and re-processed to include touch probe routines.