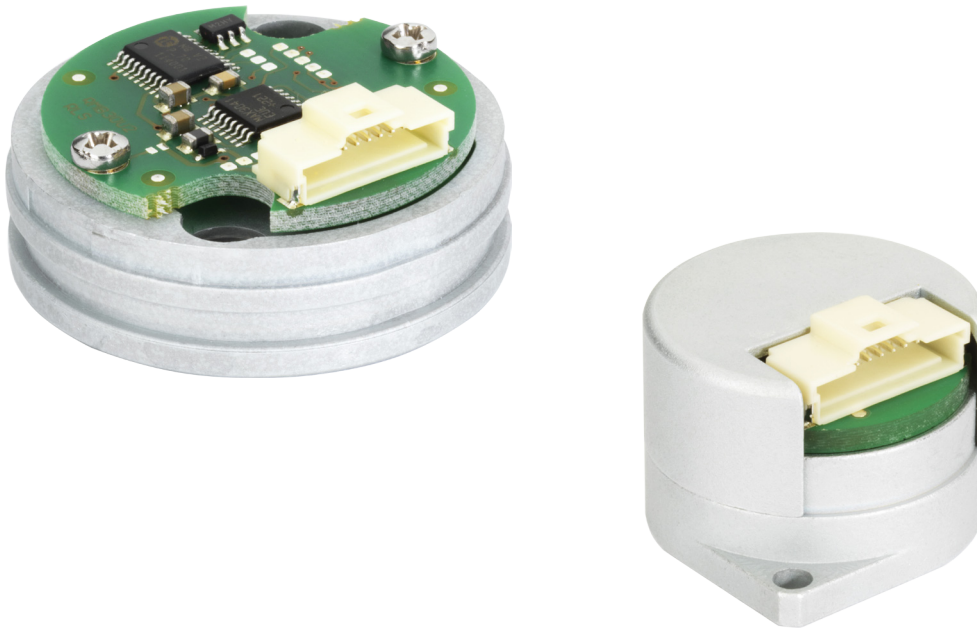


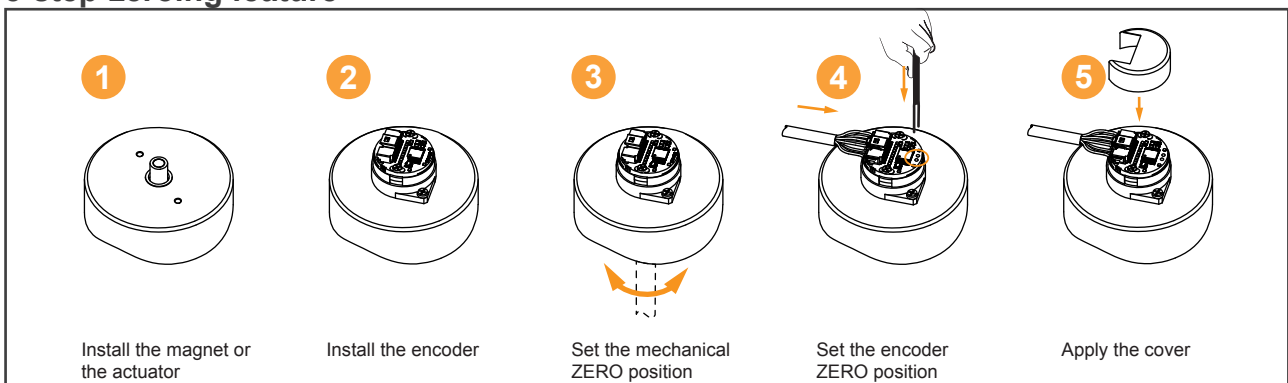
Motor commutation encoder with zeroing feature



Features

- Incremental resolution from 256 cpr to 8,192 cpr
- Simple installation and setup
- U, V, W commutation signals with up to 16 poles
- Industry standard incremental outputs (RS422)
- Operating speed to 30,000 rpm
- Compact - 22 mm or 35 mm diameter body
- Non-contact, frictionless design
- Low inertia
- Excellent price performance

5-step-zeroing feature



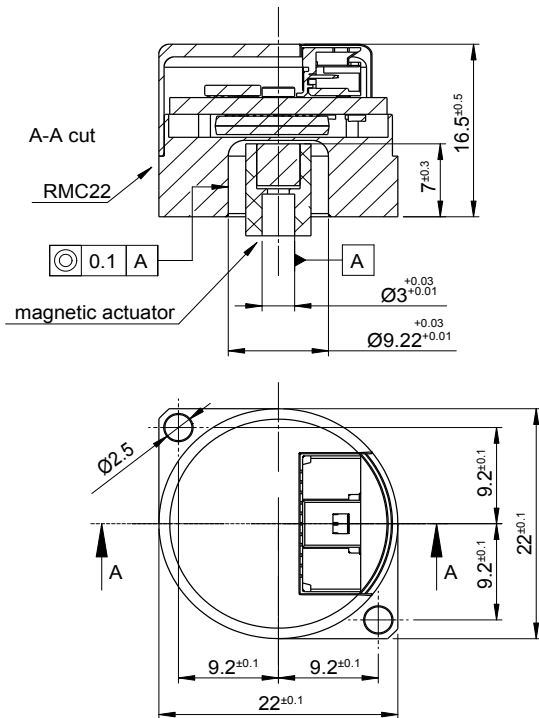
RMC technical specifications

	RMC22	RMC35
Power supply	5 V	
Power consumption	max. 30 mA	max. 40 mA
Maximum speed	30,000 rpm	
Accuracy	±0.5°	
Incremental outputs	A+, A-, B+, B-, Z+, Z-	
Incremental resolution (counts per revolution)	Binary	256, 512, 1,024, 2,048, 4,096
	Decimal	-
Commutation outputs	U, V, W	
Number of poles for commutation outputs	2, 4, 6, 8, 10, 12, 14, 16	
Operating temperature	-40 °C to +85 °C	

RMC dimensions

Dimensions and tolerances in mm.

RMC22



RMC35

