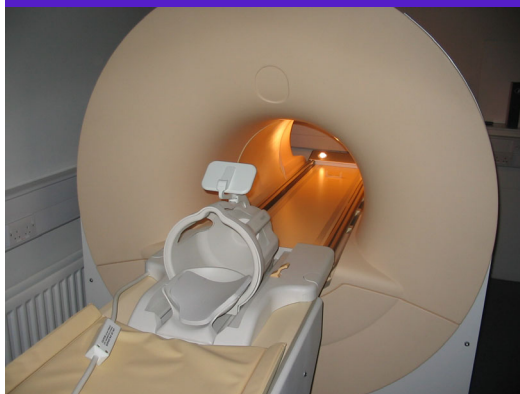
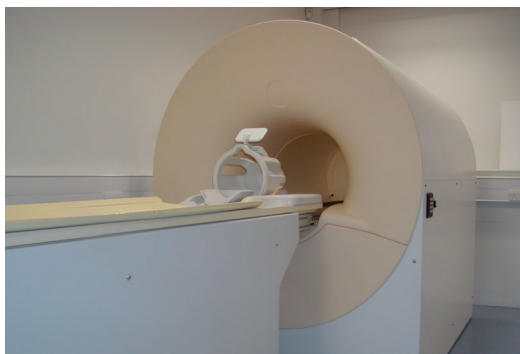


MR Simulator



Use PulseTeq's MR Simulator to familiarise your MR patients or fMRI subjects with the scanner environment.

- **Highly cost-effective solution:**
- Full-size Simulator familiarises patients or subjects with the MR environment without using valuable scanner time
- Increases the probability of successful scan outcomes and improves scanner utilisation by making patients and volunteers more at ease with the MR environment
- Reduces the amount of scanner time needed for the development of new fMRI paradigms
- **Includes:**
 - Front and rear facades and side covers
 - Patient tube with illumination
 - Fixed height patient table with manual horizontal motion
 - Option for playing recorded gradient acoustic noise
 - Optional head coil



MR Simulator: Specifications

Magnet Enclosure	1824mm L x 1516mm W x 1683mm H
Bore Diameter	595mm
Patient Table	2543mm L x 596mm W x 914mm H
Overall Length	4367mm
Total Weight	300 kg
Power Requirement	110V, 60Hz, 200Watts



PulseTeq

PulseTeq Limited
New Mills
Wotton-under-Edge,
Gloucestershire GL12 8JR UK

Phone: +44(0)1453 855 381
Fax: +44(0)1453 855 901
Email: enquiries@pulseteq.com
Web: www.pulseteq.com

© PulseTeq Limited 2006