

REXA30 ultra-high accuracy absolute angle encoder



With zero coupling losses and exceptional repeatability, the REXA30 ultra-high accuracy angle encoder achieves better than ± 1 arc second total installed accuracy.

Like the RESA30 encoder, the REXA30 is a stainless steel ring with the scale graduations marked axially onto the periphery, but with a number of differences to improve upon RESA30's already impressive accuracy.

REXA30 has a thicker cross-section to ensure that the only significant installation error is eccentricity. Eccentricity is easily removed by using 2 readheads, and combining the signals inside the host controller.

The only errors remaining are graduation errors and readhead SDE, both of which are so small they are often negligible.

As a non-contact encoder, REXA30 offers dynamic performance advantages, eliminating coupling losses, oscillation, shaft torsion and other hysteresis errors that plague enclosed encoders.

The REXA30 system operates at temperatures up to $+80$ °C and speeds to 8 500 rev/min.

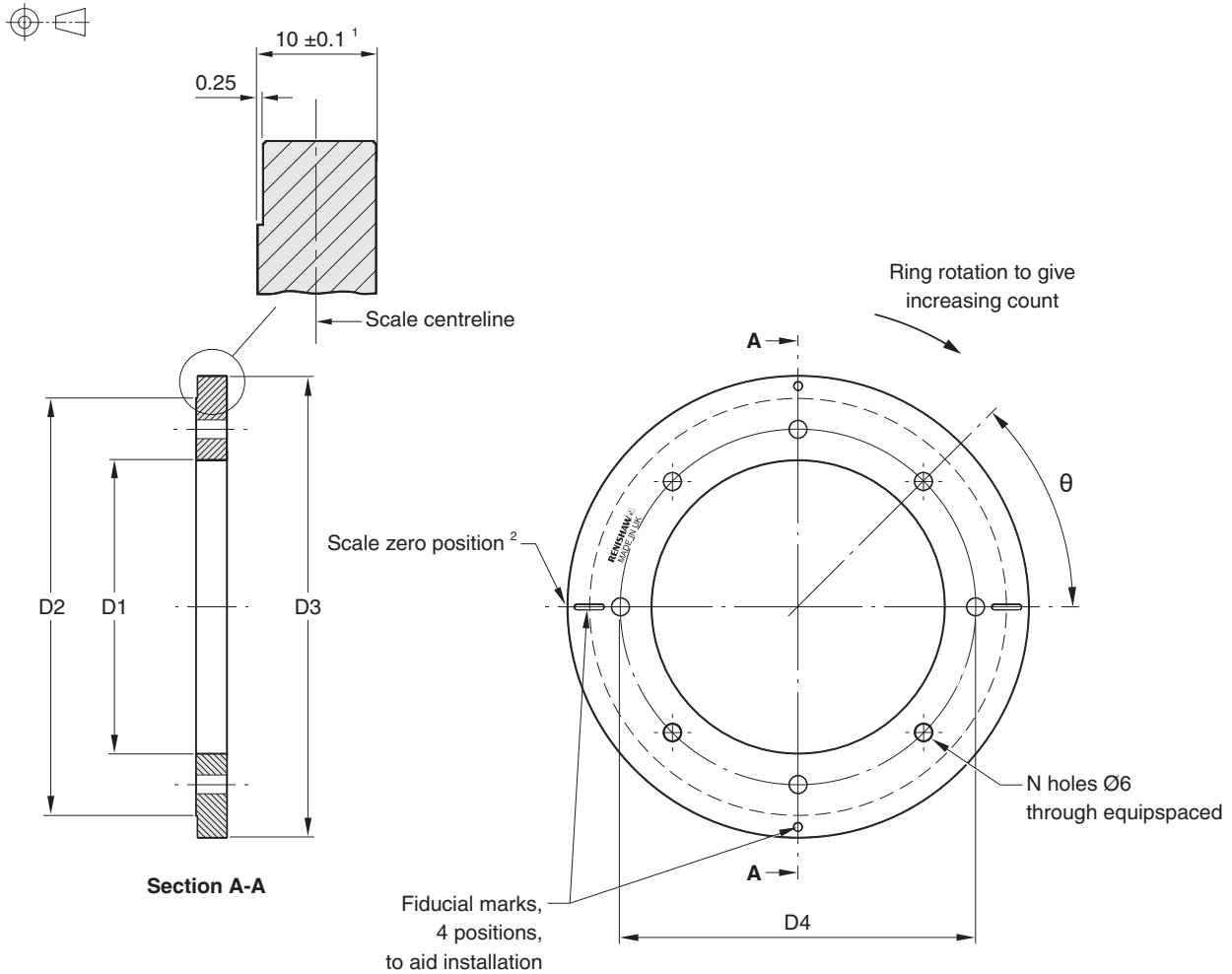
- Use with two RESOLUTE™ readheads to give ultra-high accuracy
- Installed accuracy to ± 1 arc second with dual readheads

REXA30 outer diameter	Total installed accuracy (with 2 readheads)
≥ 100 mm	± 1 arc second
75 mm	± 1.5 arc second
≤ 57 mm	± 2 arc second

- Sub-divisional error to ± 0.04 arc second
- Resolutions to 0.00030 arc second
- Repeatability to 0.01 arc second
- Wide range of standard sizes from 52 mm to 417 mm
- Large internal diameter for ease of integration
- Flange mounted with easy 4-point adjustment method

REXA30 installation drawing

Dimensions and tolerances in mm



Nominal external diameter (mm)	Dimensions			Mounting holes		
	D1	D2	D3	N	D4	θ
52 ³	26	50	52.1 – 52.2	4	38	90°
57 ³	26	50	57.25 – 57.35	4	38	90°
75	40.5	64.5	75.3 – 75.4	8	52.5	45°
100	57.5	97.5	100.2 – 100.3	8	77.5	45°
103	57.5	97.5	103.0 – 103.2	8	77.5	45°
104	57.5	97.5	104.2 – 104.4	8	77.5	45°
115	68	108	114.5 – 114.7	8	88	45°
150	96	136	150.2 – 150.4	8	116	45°
183	122.5	162.5	183.2 – 183.4	12	142.5	30°
200	136	176	200.2 – 200.4	12	156	30°
206	140.5	180.5	206.1 – 206.5	12	160.5	30°
209	140.5	180.5	208.4 – 208.8	12	160.5	30°
229	160.5	200.5	229.0 – 229.4	12	180.5	30°
255	180.5	220.5	254.4 – 254.8	12	200.5	30°
300	216	256	300.2 – 300.4	12	236	30°
350	256	296	350.2 – 350.4	16	276	22.5°
417	305	345	417.0 – 417.4	16	325	22.5°

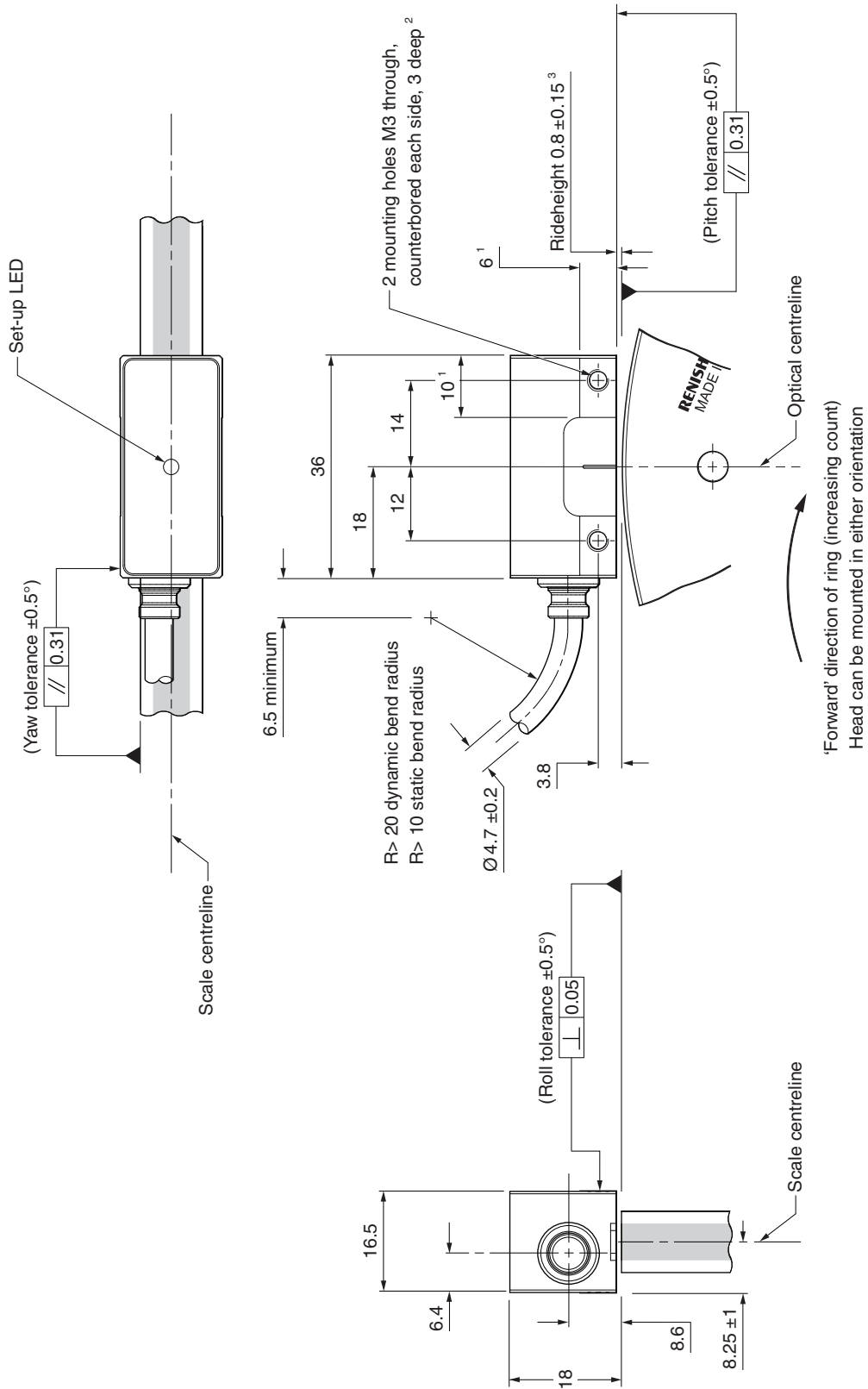
¹ Graduations are centered within this dimension.

² The scale zero position is radially aligned with the centre of the mounting hole to the left of the 'Renishaw' logo.

³ 52 mm and 57 mm rings have dimple fiducial features and no slots.

RESOLUTE readhead installation drawing

Dimensions and tolerances in mm



1 Extent of mounting faces.

2 The recommended thread engagement is 5 mm minimum (8 mm including counterbore) and the recommended tightening torque is 0.5 Nm to 0.7 Nm.

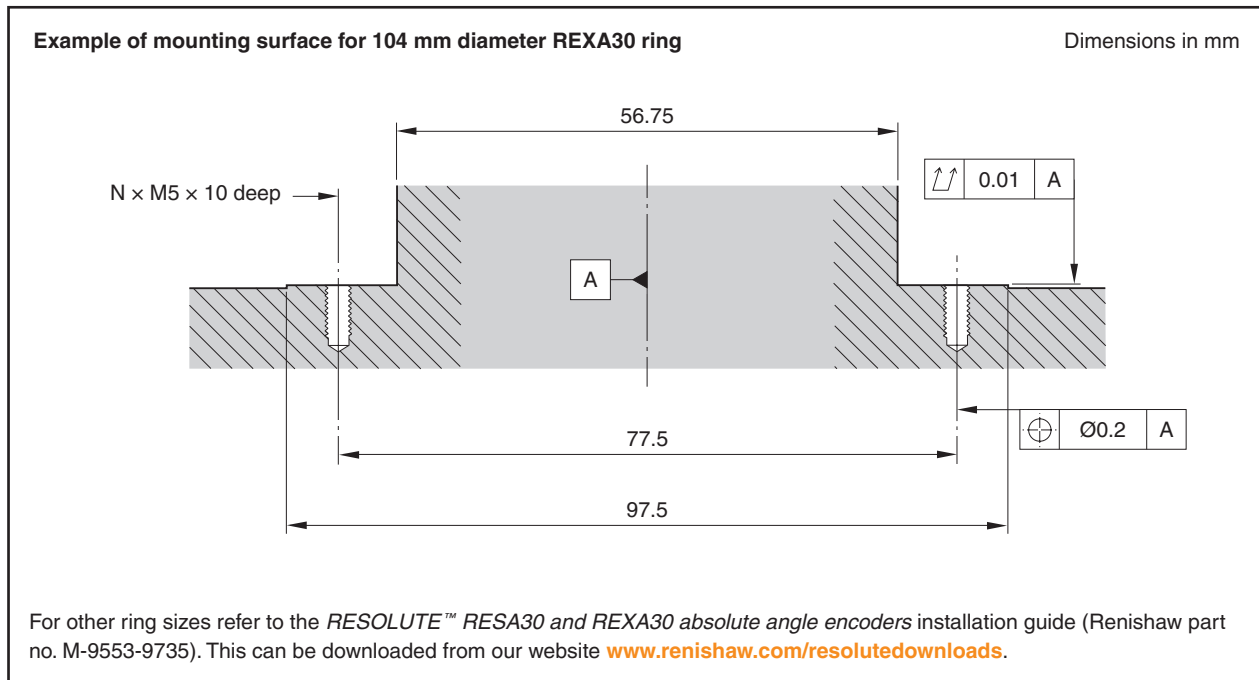
3 0.8 ± 0.1 mm on 52 mm rings.

For more information on installation and mounting options, refer to the RESOLUTE™ RESA30 and REXA30 absolute angle encoders installation guide (Renishaw part no. M-9553-9735). This can be downloaded from our website www.renishaw.com/resolvedownloads or contact your local Renishaw representative.

Mounting method

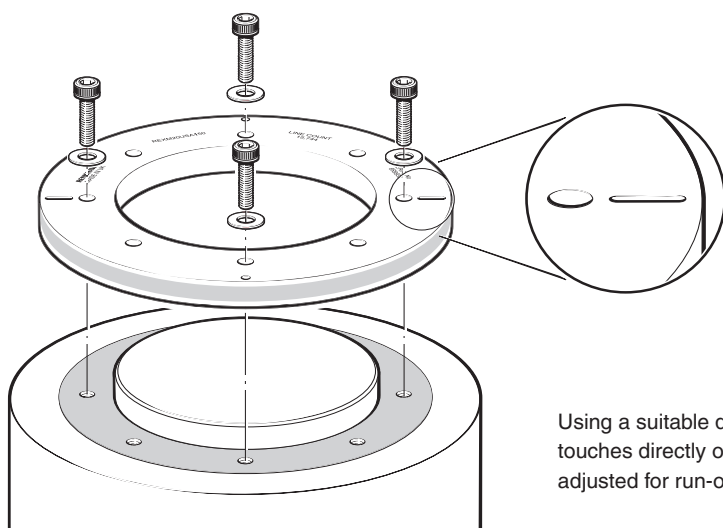
IMPORTANT: Flange mount only. Do **NOT** interference fit.

NOTE: If using REXA30 with a RESOLUTE ETR, please contact your local Renishaw representative for more information.



Installation technique

Refer to the *RESOLUTE™ RESA30 and REXA30 absolute angle encoders* installation guide (Renishaw part no. M-9553-9735) for full details. This can be downloaded from our website www.renishaw.com/resolutedownloads.



REXA30 rings are made with 4 fiducial points engraved onto the top surface, which simplify alignment.

Using a suitable dial test indicator, positioned so that the stylus ball touches directly onto the scale surface, the ring only needs to be adjusted for run-out at the 4 fiducial points.

Operating specifications

Material	303/304 stainless steel		
Coefficient of thermal expansion (at 20 °C)	15.5 ±0.5 µm/m/°C		
Temperature	(system)	Storage	–20 °C to +80 °C (Standard and FS systems) –40 °C to +80 °C (ETR system) 0 °C to +80 °C (UHV system)
	(readhead)	Operating	0 °C to +80 °C (Standard and FS readheads) –40 °C to +80 °C (ETR readhead) 0 °C to +75 °C (UHV readhead)
	(interface)	Operating	0 °C to +55 °C (DRVIE-CLiQ interface)

Ring mass and inertia

	Nominal external diameter (mm)								
	52	57	75	100	103	104	115	150	183
Mass (kg)	0.12	0.16	0.24	0.41	0.45	0.47	0.53	0.83	1.16
Moment of inertia (kg-cm ²)	0.52	0.79	2.22	6.94	7.89	8.31	11.7	33.3	70.4

	Nominal external diameter (mm)							
	200	206	209	229	255	300	350	417
Mass (kg)	1.35	1.43	1.49	1.68	2.02	2.73	3.59	5.09
Moment of inertia (kg-cm ²)	99	111	118	164	246	468	845	1 700

Speed

Nominal external diameter (mm)	Maximum reading speed (rev/min)
52	8 500
57	7 300
75	7 100
100	4 700
103	4 400
104	4 400
115	3 800
150	2 700
183	2 500
200	2 200
206	2 100
209	2 000
229	1 800
255	1 600
300	1 200
350	1 200
417	900

NOTE: The maximum speed for REXA30 rings is limited by mechanical effects. The readhead is capable of reading much higher speeds. For more information and advice on using angle encoders at high speed, please contact your local Renishaw representative.

Resolution

RESOLUTE is available with a variety of resolutions, to meet the needs of a wide range of applications.

The choice of resolutions depends on the serial protocol being used, but there are no limitations due to ring size, for example, FANUC 27 bit resolution is available on all ring sizes.

BiSS RESOLUTE resolution options:

Resolution	Counts per revolution	Arc second
18 bit	262 144	≈ 4.94
26 bit	67 108 864	≈ 0.019
32 bit	4 294 967 296	≈ 0.00030

NOTE: 32 bit resolution is below the noise floor of the RESOLUTE encoder.

FANUC RESOLUTE resolution options:

Resolution	Counts per revolution	Arc second
27 bit	134 217 728	≈ 0.0097
31 bit	2 147 483 648	≈ 0.0006

Mitsubishi RESOLUTE resolution options:

Resolution	Counts per revolution	Arc second
23 bit	8 388 608	≈ 0.15
27 bit	134 217 728	≈ 0.0097

Panasonic RESOLUTE resolution options:

Resolution	Counts per revolution	Arc second
23 bit	8 388 608	≈ 0.15
32 bit	4 294 967 296	≈ 0.0003

Siemens DRIVE-CLiQ RESOLUTE resolution options:

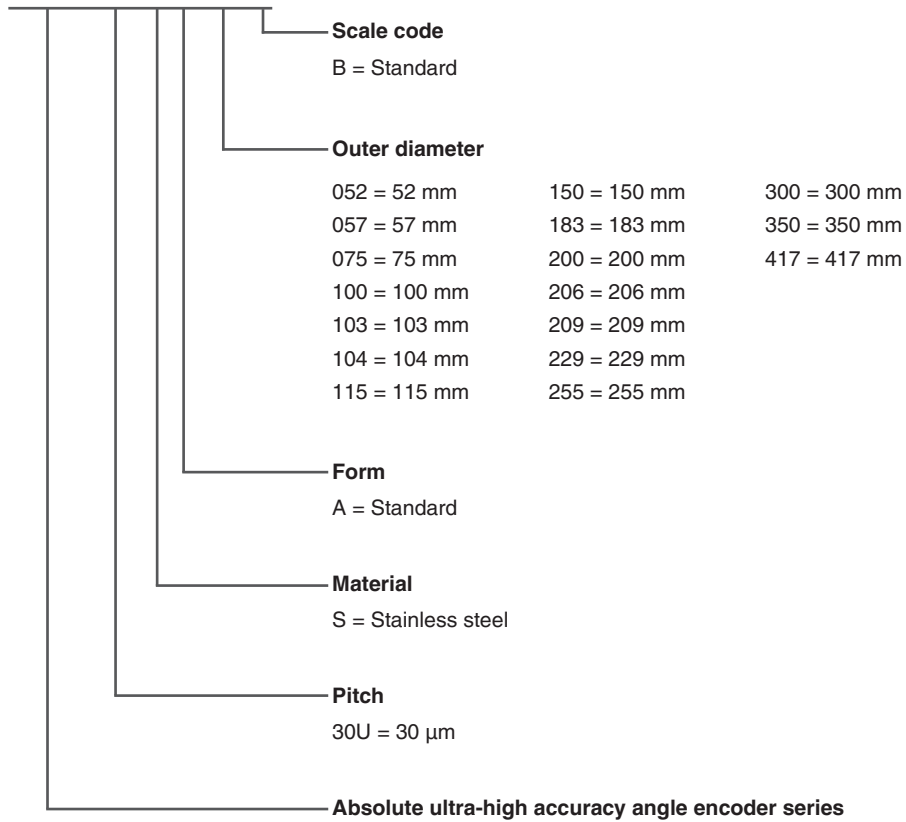
Resolution	Counts per revolution	Arc second
26 bit	67 108 864	≈ 0.019
29 bit	536 870 912	≈ 0.0024

Yaskawa RESOLUTE resolution options:

	Resolution	Counts per revolution	Arc second
Rotary servomotors:	24 bit	16 777 216	≈ 0.077
Fully closed loop control:	23 bit	8 388 608	≈ 0.154
	26 bit	67 108 864	≈ 0.019
	30 bit	1 073 741 824	≈ 0.0012

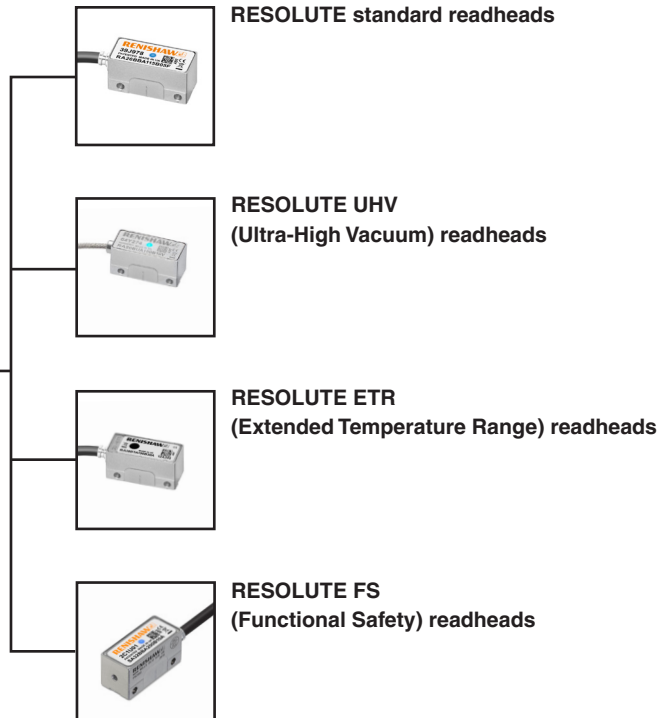
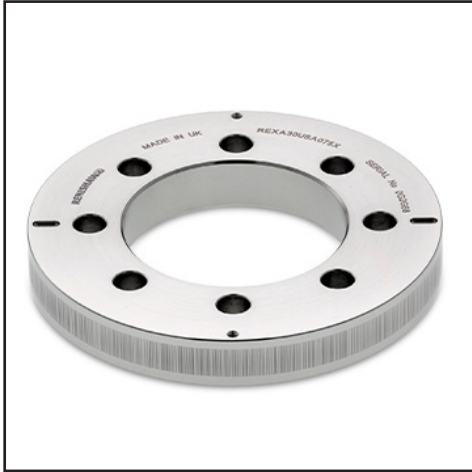
Angle encoder part numbers

REXA 30U S A 150 B



Compatible products

REXA30



www.renishaw.com/contact



#renishaw

+44 (0) 1453 524524

uk@renishaw.com

© 2009–2026 Renishaw plc. All rights reserved. This document may not be copied or reproduced in whole or in part, or transferred to any other media or language by any means, without the prior written permission of Renishaw.
RENISHAW® and the probe symbol are registered trade marks of Renishaw plc. Renishaw product names, designations and the mark 'apply innovation' are trade marks of Renishaw plc or its subsidiaries. BiSS® is a registered trade mark of iC-Haus GmbH. DRIVE-CLIQ is a registered trademark of Siemens. Other brand, product or company names are trade marks of their respective owners.
WHILE CONSIDERABLE EFFORT WAS MADE TO VERIFY THE ACCURACY OF THIS DOCUMENT AT PUBLICATION, ALL WARRANTIES, CONDITIONS, REPRESENTATIONS AND LIABILITY, HOWSOEVER ARISING, ARE EXCLUDED TO THE EXTENT PERMITTED BY LAW. RENISHAW RESERVES THE RIGHT TO MAKE CHANGES TO THIS DOCUMENT AND TO THE EQUIPMENT, AND/OR SOFTWARE AND THE SPECIFICATION DESCRIBED HEREIN WITHOUT OBLIGATION TO PROVIDE NOTICE OF SUCH CHANGES.
Renishaw plc. Registered in England and Wales. Company no: 1106260. Registered office: New Mills, Wotton-under-Edge, Glos, GL12 8JR, UK.

Part no.: L-9517-9405-04-A

Issued: 07.2026