

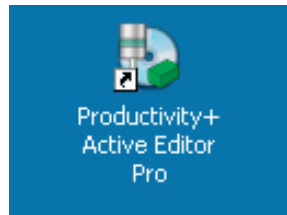
# Starting a Productivity+™ Active Editor Pro session

The aim of this module is to guide users through the stages required to start a Productivity+™ Active Editor Pro session, import existing NC machine code, and a solid model of the component that will be produced using that code.

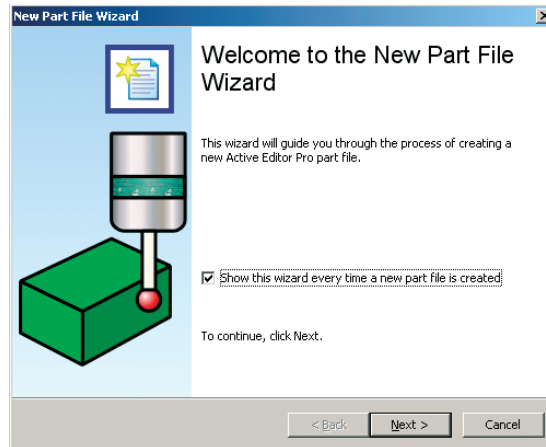
Having completed this module you will be able to:

- Import an existing machining program in NC format
- Import 3D CAD (solid) models

Use the desktop icon to open the Productivity+™ Active Editor Pro software.

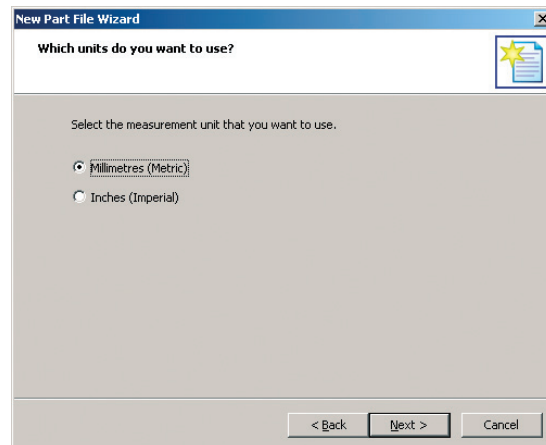


On opening, the software will display the New Part File Wizard. This wizard takes you through the steps necessary to import existing NC code (as required) and solid models.

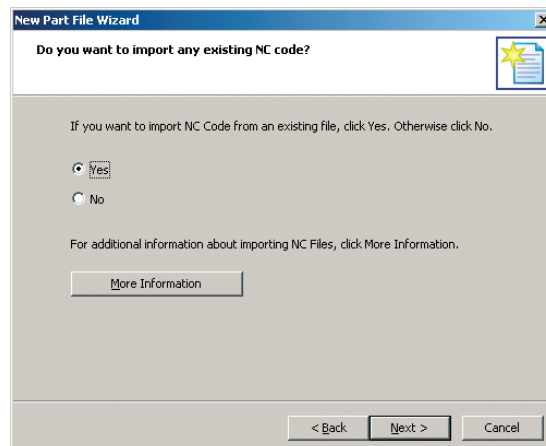


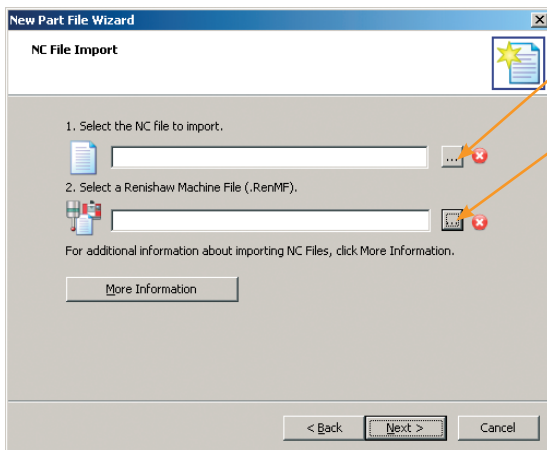
The following screenshots are taken from this New Part File Wizard.

Select the required measurement units: Millimetres or Inches. The default selection is millimetres.



If you wish to import an existing machining program (NC code), select Yes in the next screen.



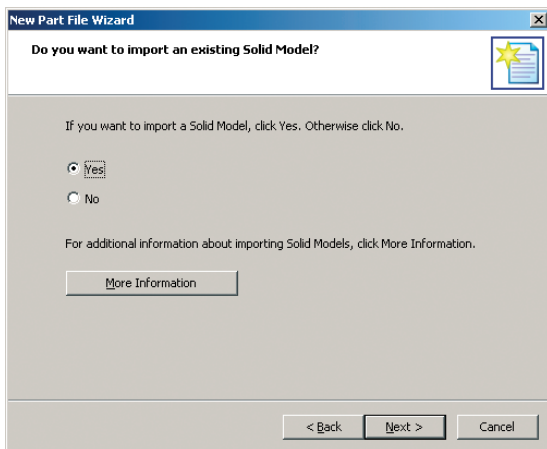


Click here and navigate to select the required NC file.

Click here and navigate to select the required machine configuration (.RenMF) file.

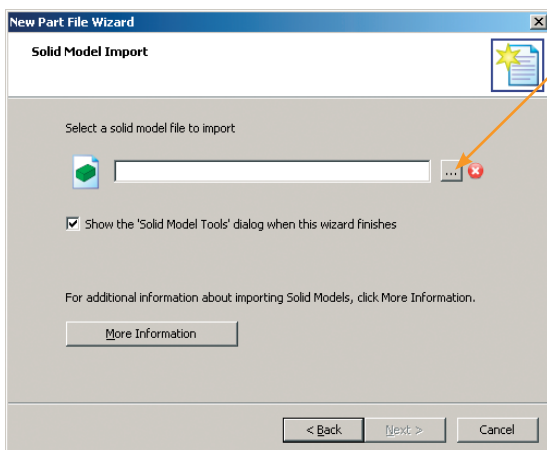
Once files have been selected, the crosses to the right of these boxes will be replaced by green ticks.

When complete, select Next.



The next screen allows you to import a solid model. The software assumes that you wish to do this: by default the Yes option is selected.

If you wish to import a solid model, select Next. Alternatively, if you have no model to import, select No followed by Next.



Click here and use the resulting dialog box to navigate to the required solid model.

The documentation CD contains an example solid model, Demo\_Part.x\_t, which can be used when working through these modules.

Supported model types are:

- Parasolid®
- IGES
- STEP
- ACIS®
- CATIA®
- Autodesk® Inventor™
- Pro/ENGINEER®
- SolidWorks®
- Unigraphics®/NX

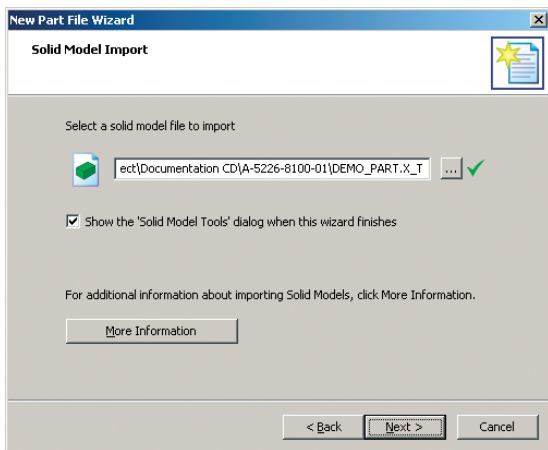
Parasolid and Unigraphics/NX are registered trademarks of Siemens Product Lifecycle Management Software Inc in the United States and other countries.

ACIS is a registered trademark of Spatial Corporation.

CATIA and SolidWorks are registered trademarks of Dassault Systèmes or its subsidiaries in the United States and/or other countries.

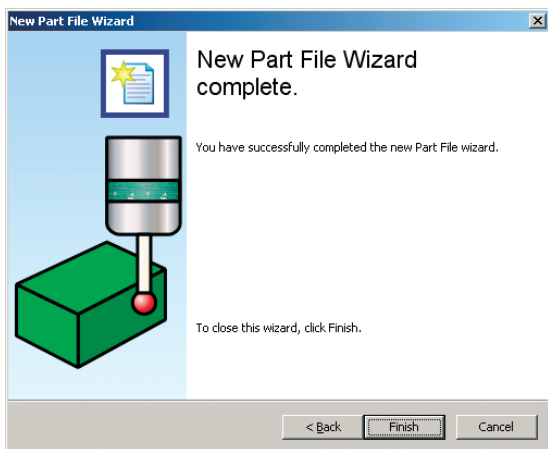
Autodesk Inventor are registered trademarks and trademarks of Autodesk Inc in the United States and other countries.

Pro/ENGINEER as a registered trademark of PTC and/or its subsidiaries in the United States and other countries.



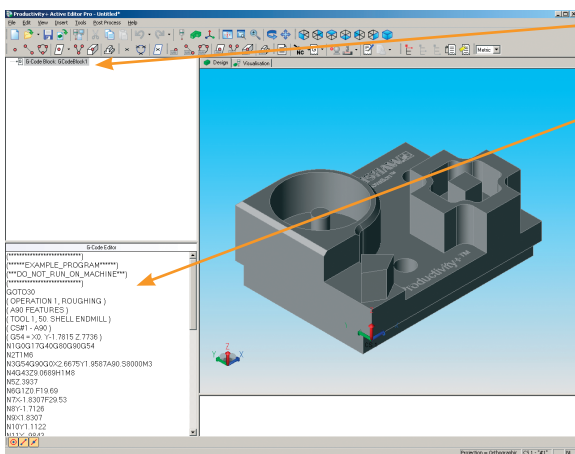
When you have selected your model file, the cross on the right of the dialog box is replaced by a green tick.

Select Next.



You have now completed all the necessary steps to import an existing NC machining program and corresponding solid model.

Select Finish.



The imported NC program is indicated as a G-Code block in the program viewer window.

The contents of this G-Code block (i.e. the program itself) is shown in the G-Code Editor window.

**Renishaw plc**  
New Mills, Wotton-under-Edge,  
Gloucestershire GL12 8JR  
United Kingdom

**T** +44 (0) 1453 524524  
**F** +44 (0) 1453 524901  
**E** uk@renishaw.com  
[www.renishaw.com](http://www.renishaw.com)

**RENISHAW**   
**apply innovation™**



**For worldwide contact details please see our main website at**  
**[www.renishaw.com/contact](http://www.renishaw.com/contact)**

RENISHAW HAS MADE CONSIDERABLE EFFORTS TO ENSURE THE CONTENT OF THIS DOCUMENT IS CORRECT AT THE DATE OF PUBLICATION BUT MAKES NO WARRANTIES OR REPRESENTATIONS REGARDING THE CONTENT. RENISHAW EXCLUDES LIABILITY, HOWSOEVER ARISING, FOR ANY INACCURACIES IN THIS DOCUMENT.

©2004-2010 Renishaw plc. All rights reserved.

Renishaw reserves the right to change specifications without notice

RENISHAW® and the probe emblem used in the RENISHAW logo are registered trademarks of Renishaw plc in the UK and other countries.  
apply innovation is a trademark of Renishaw plc.



H - 4007 - 0031 - 02

Issued February 2010 Part no. H-4007-0031-02-A