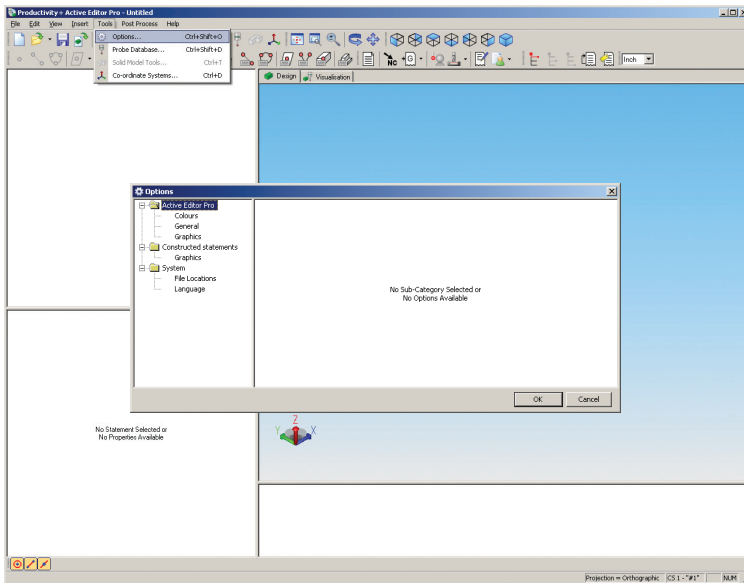


# Options

This module demonstrates how users can alter various settings and behaviours within the Productivity+™ Active Editor Pro software, such as item colours, fonts and probe path line width.

Having completed this module you will be able to:

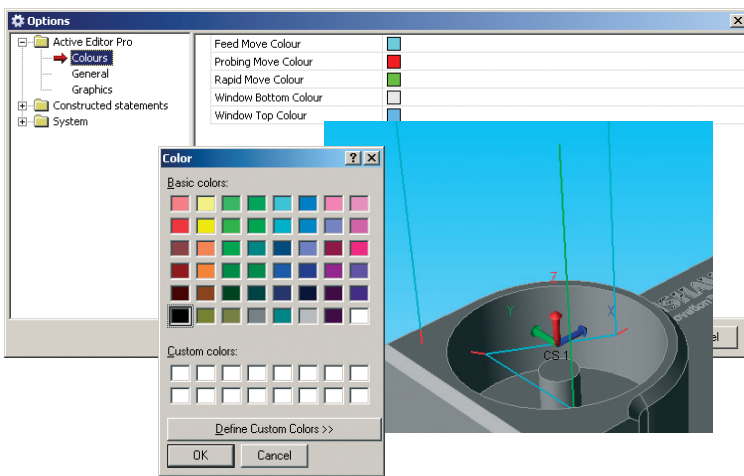
- Amend software settings within Productivity+™ Active Editor Pro



## Customising the way Productivity+™ Active Editor Pro works

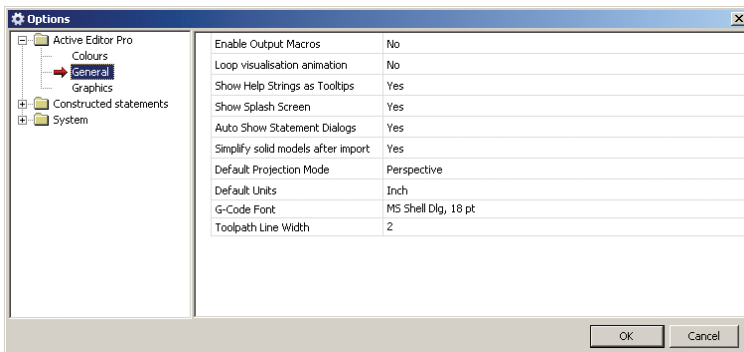
Select Tools from the menu bar, followed by Options.

A dialog box appears allowing you to select and amend a number of features within the software.



Expand the Active Editor Pro folder, and select Colours (single click). You can use this screen to change the appearance of the Model Viewer window and the various sections of the visible probe path.

To change a colour setting: select the required field e.g. Feed Move Colour, click the ellipsis button to the right of the field, and from the resulting Color dialog select the required new colour (or define a custom colour).



The General option allows the following items to be changed:

### Enable Output Macros

Set to Yes to allow you to run the Output Macro Wizard.

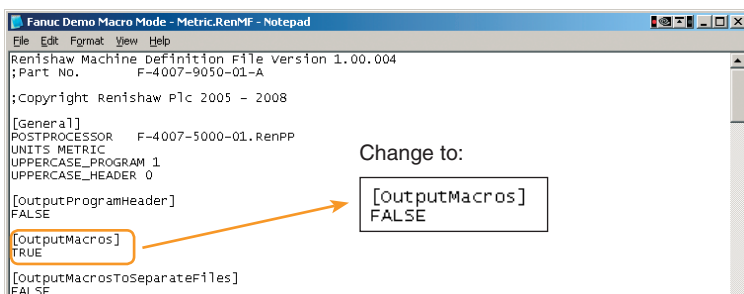
**Note:** To run the wizard you MUST make a change to the .RenMF file.

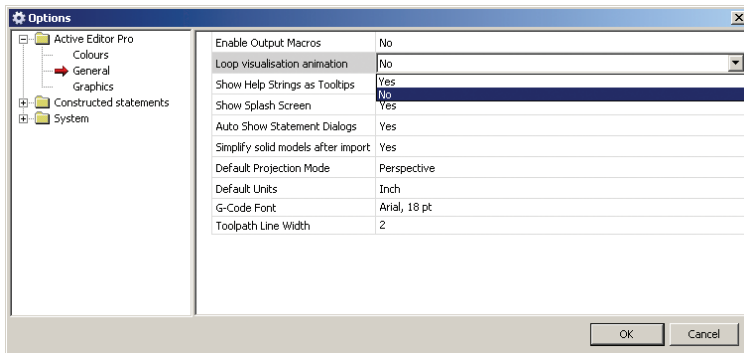
The following must be set to FALSE:

```
[OutputMacros]
FALSE
```

See the Getting started guide (found on your software CD) for more information.

You can now output all macros to the machine memory: when you post a program only the top level program will be produced.





### Loop visualisation animation

The recommended setting for this option is No, however for certain applications, particularly demonstrations/exhibitions, it may prove useful to continually loop program visualisation.

### Show Help Strings as Tooltips

The recommended setting for this option is Yes.

### Show Splash Screen

The recommended setting for this option is Yes.

### Auto Show Statement Dialogs

The recommended setting for this option is Yes.

### Simplify solid models after import

The recommended setting for this option is Yes.

### Default Projection Mode

Use to select the default project mode: either Perspective or Orthographic.

### Default Units

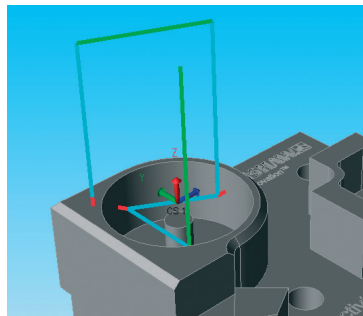
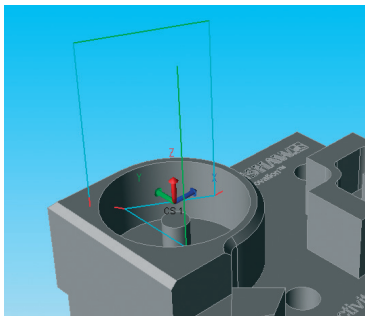
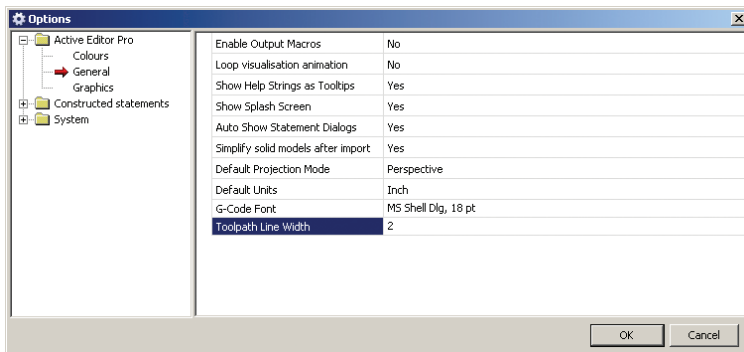
Default setting is Metric. The alternative option is Inch.

### G-Code Font

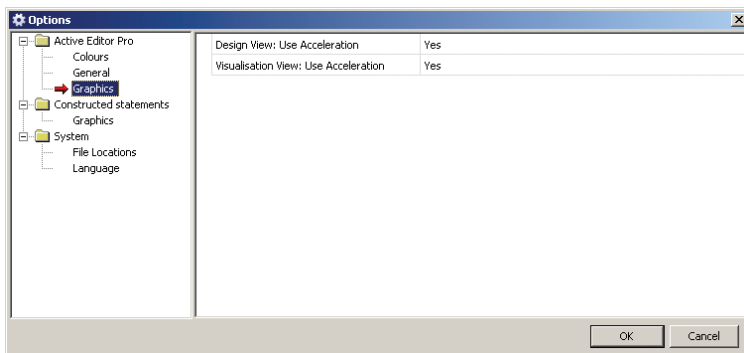
Font type, style and size used within G-Code blocks.

### Toolpath Line Width

This option allows you to change the tool path from the default setting of 2 to a maximum of 6.



Effect of changing tool path width from 2 pt to 6 pt



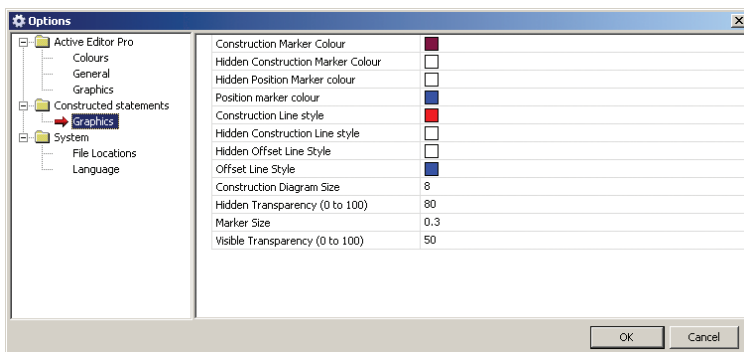
Fields within the Graphics option should all be set to Yes. Only change these settings if you are experiencing problems with the graphics.

### Design View: Use Acceleration

When set to Yes, the software will use the acceleration features of the installed graphics card.

### Visualisation View: Use Acceleration

When set to Yes, the software will use the acceleration features of the installed graphics card.

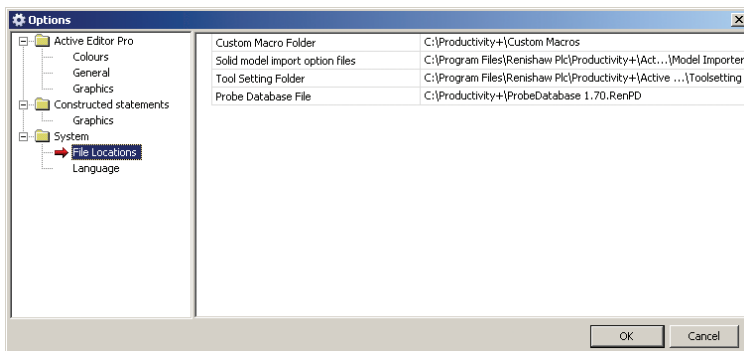


Next select the Graphics element of the Constructed statements folder.

Use these fields to modify colours, line widths and other variables which indicate the position of constructed features.

Now expand the System folder.

The File Locations option allows the default file locations to be changed.



### Custom Macro Folder

C:\Productivity+\Custom Macros

### Solid model import option files

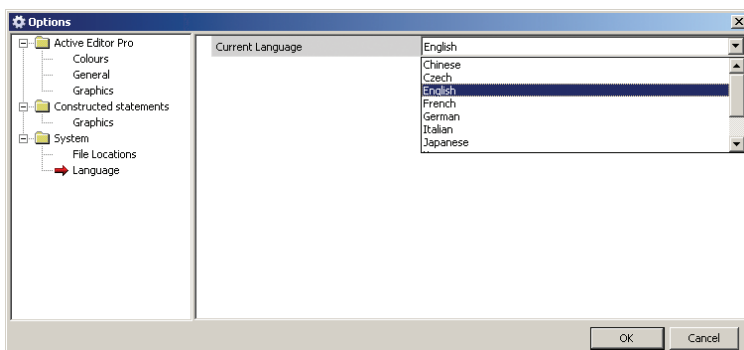
C:\Program Files\Renishaw Plc\Productivity+\Active Editor Pro\Model Importer

### Tool Setting Folder

C:\Program Files\Renishaw Plc\Productivity+\Common\Macros\Toolsetting

### Probe Database File

C:\Productivity+



The Language option allows the software language to be selected.

Available options are:

- Chinese
- Czech
- English
- French
- German
- Italian
- Japanese
- Korean
- Simplified Chinese
- Spanish

**Renishaw plc**  
New Mills, Wotton-under-Edge,  
Gloucestershire GL12 8JR  
United Kingdom

**T** +44 (0) 1453 524524  
**F** +44 (0) 1453 524901  
**E** uk@renishaw.com  
[www.renishaw.com](http://www.renishaw.com)

**RENISHAW**   
**apply innovation™**



**For worldwide contact details please see our main website at**  
**[www.renishaw.com/contact](http://www.renishaw.com/contact)**

RENISHAW HAS MADE CONSIDERABLE EFFORTS TO ENSURE THE CONTENT OF THIS DOCUMENT IS CORRECT AT THE DATE OF PUBLICATION BUT MAKES NO WARRANTIES OR REPRESENTATIONS REGARDING THE CONTENT. RENISHAW EXCLUDES LIABILITY, HOWSOEVER ARISING, FOR ANY INACCURACIES IN THIS DOCUMENT.

©2004-2010 Renishaw plc. All rights reserved.

Renishaw reserves the right to change specifications without notice

RENISHAW® and the probe emblem used in the RENISHAW logo are registered trademarks of Renishaw plc in the UK and other countries.  
apply innovation is a trademark of Renishaw plc.



H - 4007 - 0041 - 02

Issued July 2010 Part no. H-4007-0041-02-B