

# Productivity+™ Active Editor Pro screen layout

This module provides an overview of the screen layout within Productivity+™ Active Editor Pro, introducing the various view windows and menu icons.

Having completed this module you will be able to:

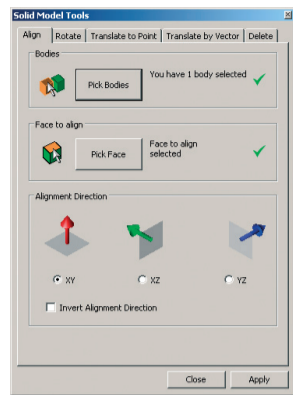
- Identify the various view windows within Productivity+™ Active Editor Pro
- Identify menu icons

# Productivity+™ Active Editor Pro screen layout

## 'Post Process'

Converts the probing cycles created by the software into G-Code format suitable for uploading to, and execution, by the machine controller.

See "Post Processing" module.



## 'Solid Model Tools'

Use to align the model with the X, Y and Z axes of the machine, or to move a part within its fixture.

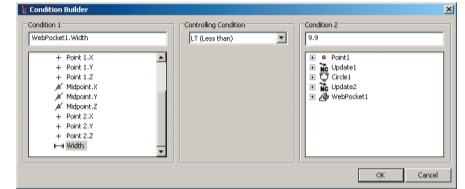
See "Productivity+™ Active Editor Pro: initial set-up" module.

CS Name	WCS Name / Number	Origin Position
CS 1	G54	25.0000 55.0000 30.0000
CS 2	G55	0.0000 28.0000 28.0000
CS 3	G56	67.5000 0.0000 25.0000

## 'Co-ordinate Systems'

Use to select Machine Work Co-ordinate Systems (WCS) for a part.

See "Productivity+™ Active Editor Pro: initial set-up" module.



## 'Measured Statements'

Use to add a feature measurement statement such as point, line or circle, to your inspection cycle.

See "Creating feature statements" module.

## 'Standard Views'

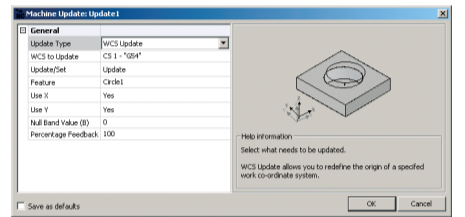
Use to manipulate the current view of the CAD model.

See "Productivity+™ Active Editor Pro: initial set-up" module.

## 'Logic'

Use to add defined conditions to the machine probing program. The machine's next move can then be determined by the results returned by that probe cycle.

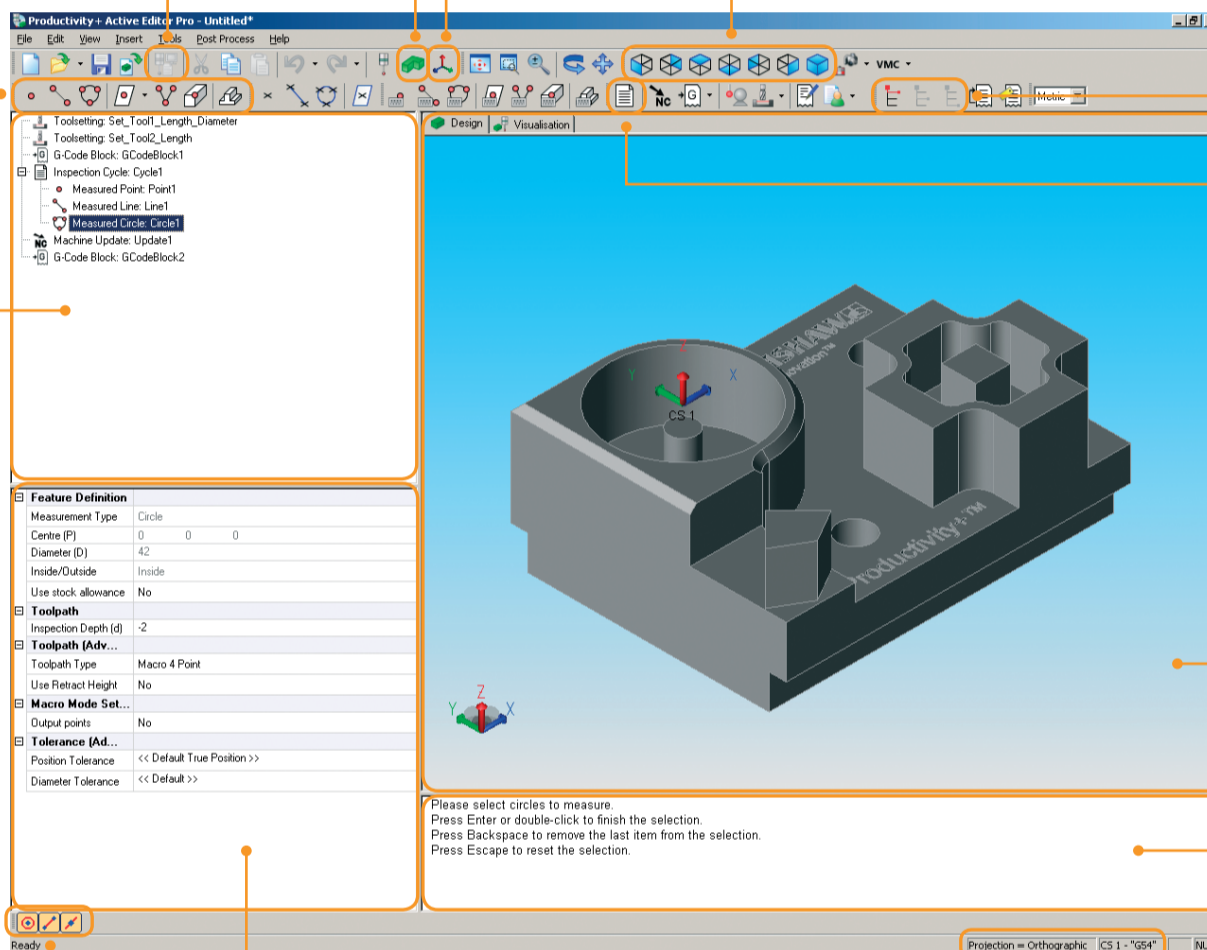
See "Using Logic" module.



## 'Machine Update'

Use to update variables such as work co-ordinate systems and tool parameters, and to perform machine updates.

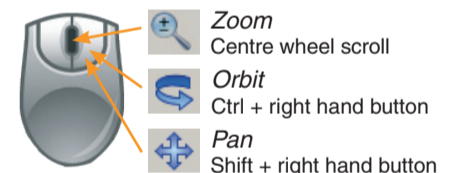
See "Updating the machine" module.



## 'Model viewer'

This view displays the imported solid model(s). Use to select the solid model features to be measured, and to preview the probe path when using the Visualisation feature.

Icons allow custom pan, zoom and rotation of the model(s), while a 'Standard views' toolbar allows selection of a number of pre-set model orientations. Some mouse based manipulation is also possible.



## 'Program viewer'

Displays the various elements of a generated program, including G-Code blocks, probing operations, machine updates and reporting.

Elements are added in a tree structure, allowing individual branches to be expanded and collapsed as required.

## 'Property viewer'

Displays details of the element which is currently selected within the Program viewer.

This view can be used to modify feature statements, identify suitable locations within a G-Code block to add probing, and to edit blocks of G-Code.

## 'Prompt viewer'

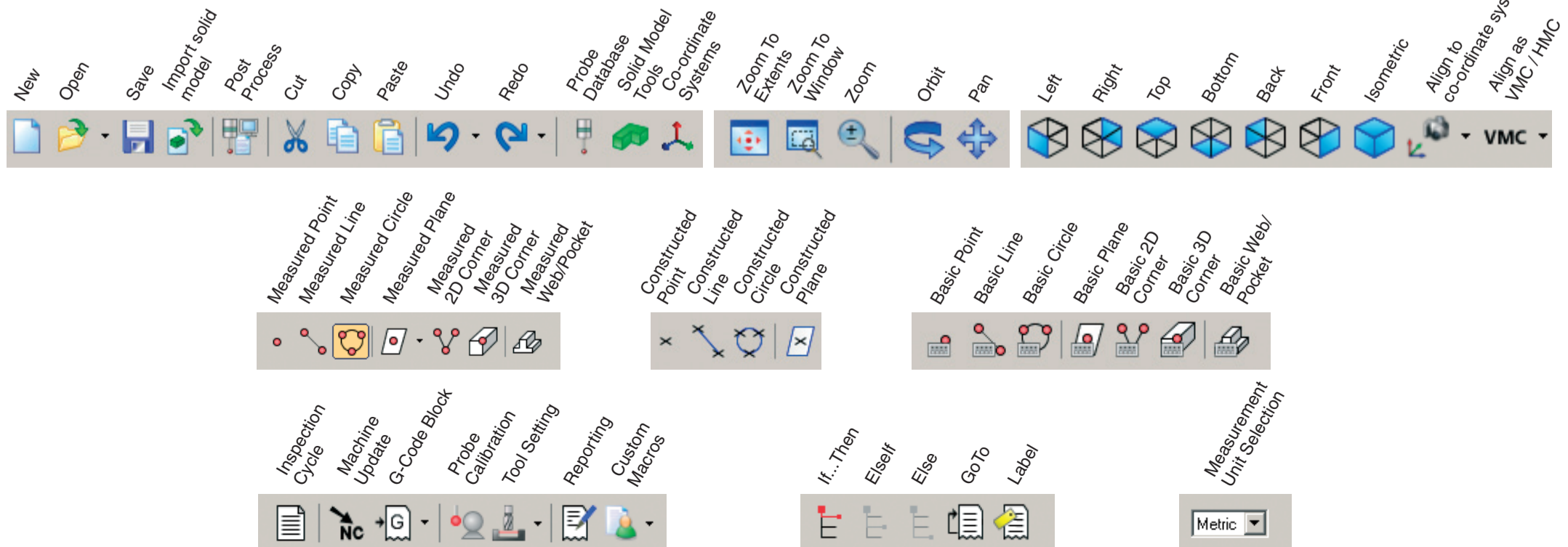
A text box which displays prompts and other information to assist in the creation of inspection cycles.

## 'Object Snap'

Enables 'snap to' functionality; useful when selecting points on the model geometry and when setting co-ordinate systems.

## 'Status Bar'

Use to toggle between Orthographic and Perspective views, and between generated co-ordinate systems.



**Renishaw plc**  
New Mills, Wotton-under-Edge,  
Gloucestershire GL12 8JR  
United Kingdom

**T** +44 (0) 1453 524524  
**F** +44 (0) 1453 524901  
**E** uk@renishaw.com  
[www.renishaw.com](http://www.renishaw.com)

**RENISHAW**   
**apply innovation™**



**For worldwide contact details please see our main website at**  
**[www.renishaw.com/contact](http://www.renishaw.com/contact)**

RENISHAW HAS MADE CONSIDERABLE EFFORTS TO ENSURE THE CONTENT OF THIS DOCUMENT IS CORRECT AT THE DATE OF PUBLICATION BUT MAKES NO WARRANTIES OR REPRESENTATIONS REGARDING THE CONTENT. RENISHAW EXCLUDES LIABILITY, HOWSOEVER ARISING, FOR ANY INACCURACIES IN THIS DOCUMENT.

©2004-2011 Renishaw plc. All rights reserved.

Renishaw reserves the right to change specifications without notice

RENISHAW® and the probe emblem used in the RENISHAW logo are registered trademarks of Renishaw plc in the UK and other countries.  
apply innovation is a trademark of Renishaw plc.



H - 4007 - 0042 - 03

Issued July 2011 Part no. H-4007-0042-03-A